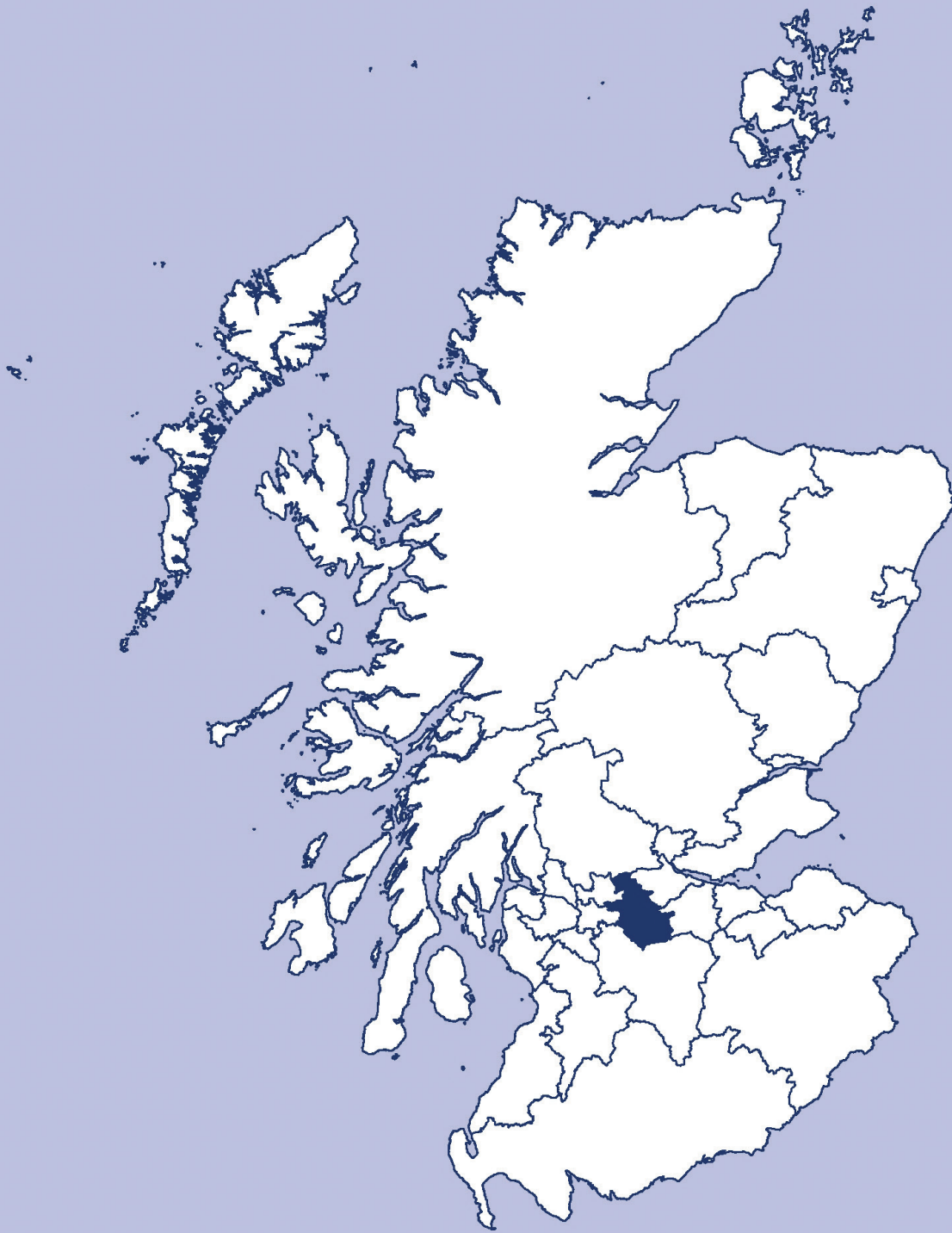


Fifth Statutory Review of Electoral Arrangements Final Recommendations



North Lanarkshire Council Area

Report to Scottish Ministers

Local Government Boundary Commission for Scotland

Fifth Statutory Review of Electoral Arrangements Final Recommendations North Lanarkshire Council Area

Membership of the Commission

Chair:	Ronnie Hinds
Deputy Chair:	William Magee OBE
Commissioners:	Roland Bean
	Professor Ailsa Henderson
	Dr Susan Walker OBE

Report Number E16022

May 2016


Local Government Boundary Commission for Scotland

Scottish Ministers

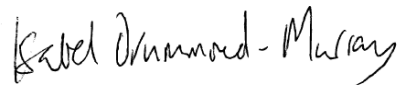
We, the Local Government Boundary Commission for Scotland, present our recommendations for North Lanarkshire Council area resulting from our Fifth Statutory Review of Electoral Arrangements.

In accordance with the provisions of section 18(3) of the Local Government (Scotland) Act 1973, copies of our report, together with illustrative maps, are being sent to North Lanarkshire Council with a request that the report and maps should be made available for public inspection at its offices.

Notice is also being given in newspapers circulating in the council area of the fact that the report has been made so that interested persons may inspect the report and maps at the Council's offices. The report is also available on our website and is being publicised on social media.



Ronnie Hinds
Chair



Isabel Drummond-Murray
Secretary

Local Government Boundary Commission for Scotland
Thistle House
91 Haymarket Terrace
Edinburgh
EH12 5HD



lgbcs@scottishboundaries.gov.uk
www.lgbc-scotland.gov.uk
Twitter: @lgbcs
May 2016

Contents

Part 1 Background	4
North Lanarkshire Council area	4
Local Government Boundary Commission for Scotland	4
Legislative requirements	5
Fifth Reviews of Electoral Arrangements.....	5
Issues considered	6
Effective and convenient local government.....	6
Determining councillor numbers in council areas	6
Electorate data.....	9
Ward design.....	9
Electoral parity.....	10
Local ties	10
Easily-identifiable boundaries.....	11
Special geographical considerations.....	11
Other factors	11
Consultation	11
Part 2 Conducting the Review	13
Councillor numbers	13
Consultation with North Lanarkshire Council.....	13
Consultation with the public	13
Ward design.....	14
Consultation with North Lanarkshire Council.....	15
Consultation with the public	15
Development of our final recommendations.....	15
Part 3 Final Recommendation for North Lanarkshire Council area	17
Appendices	41
Appendix A Existing and Recommended Wards for North Lanarkshire Council area.....	42
Appendix B Local Government (Scotland) Act 1973, as amended: Schedule 6 – Rules to be observed in considering electoral arrangements	43
Appendix C Categorising Councils Matrix	44
Appendix D Local Government (Scotland) Act 1973: Conduct of Reviews.....	45
Appendix E Timetable for the Fifth Reviews of Electoral Arrangements.....	47
Appendix F Index of Commission Meetings, Papers and Minutes for North Lanarkshire Council area.....	48

Part 1 Background

North Lanarkshire Council area

1. North Lanarkshire Council is located in Scotland's Central Belt and is bordered by several councils. North Lanarkshire covers an area of approximately 470 square kilometres. It is the fourth most populated council area in Scotland. The largest town in North Lanarkshire is Cumbernauld, while the council headquarters are in Motherwell.
2. Under 1 in 10 of the population (7%) of North Lanarkshire Council area live outwith settlements of 3,000 or more people. It is therefore one of Scotland's more urban council areas.
3. Based on the Scottish Index of Multiple Deprivation (SIMD) 2012, the percentage of North Lanarkshire Council area's population in Scotland's 15% most deprived datazones is 22.4%. North Lanarkshire Council area contains 100 datazones within the 15% most deprived datazones in Scotland; these are located in 17 wards. This is an above-average level of deprivation compared to other council areas in Scotland.
4. The National Records of Scotland (NRS) 2010 population projection (published 2012) states that North Lanarkshire Council area's population is projected to increase from 338,292 in 2014 to 339,925 by 2019.
5. At the beginning of the review North Lanarkshire Council area's electorate was 250,035 (at September 2013). The number of dwellings in the area was 149,763 (based on NRS 2012 data).
6. The existing electoral arrangements consist of 70 councillors, representing 10 4-member wards and 10 3-member wards (see Appendix A: Existing and Recommended wards).

Local Government Boundary Commission for Scotland

7. The Local Government Boundary Commission for Scotland was established under the Local Government (Scotland) Act 1973 as an independent body with responsibility for keeping under review local government arrangements in Scotland.
8. We are required to conduct electoral reviews of each council area at intervals of 8 to 12 years, as specified in Section 16 of the Local Government (Scotland) Act 1973. We last completed such reviews in 2006. Those reviews introduced multi-member wards but councillor numbers were not amended. Our Third Review, concluded in 1997, was the last time councillor numbers throughout Scotland were amended.

Legislative requirements

9. The legislation which sets out the rules for electoral reviews is Part II of the Local Government (Scotland) Act 1973. When making our recommendations, we must consider the criteria set out in Section 13 and Schedule 6 of that Act.
10. Section 13 sets out that we should conduct our reviews with an overall aim of acting in the interests of effective and convenient local government. Schedule 6 sets out more specific requirements.
11. The full text of Schedule 6 is in Appendix B, and its requirements are:
 - the number of electors per councillor in each ward shall be, as nearly as may be, the same;
 - subject to this, we shall have regard to:
 - local ties that would be broken by fixing a particular boundary; and
 - the desirability of fixing boundaries that are easily identifiable with the first of these taking precedence over the second;
 - we may depart from the strict application of electoral parity to reflect special geographical considerations.
12. Each ward must elect 3 or 4 councillors.
13. When recommending ward boundaries, we take into account the likely change in the number of electors in a council area within the 5 years immediately following our consideration.
14. There were no Ministerial directions in place when we conducted our reviews, but Scottish Ministers informed us at the start of the reviews that they would find it difficult to justify an increase in councillor numbers at that time. Our recommendations maintain overall councillor numbers in Scotland at a similar level as at present.

Fifth Reviews of Electoral Arrangements

15. This review is one of 32 being conducted across Scotland to make recommendations for the number of councillors on each council, the number of councillors in each ward, the boundaries of each ward and the recommended ward name.
16. Overall the recommendations provide for 1,219 councillors in 351 wards: a decrease of 4 councillors and 2 wards relative to existing arrangements.
17. Across Scotland as a whole, 94% of electors will be in wards where parity is within 10% of the average for their council area, compared to less than 84% currently.
18. Across Scotland, the variation from parity between councillors will reduce from 6% currently to 5%. This means that representation of the electorate within council areas will be more evenly shared between councillors.

Issues considered

Effective and convenient local government

19. There is no statutory definition of effective and convenient local government. It is, however, the fundamental consideration for recommendations arising from any of our reviews.
20. Our approach recognised that effective and convenient local government has to balance effectiveness and convenience for a council, councillors and residents. For example:
- councils need to manage and deliver diverse services across their council area;
 - councillors need to be able to carry out their functions including representing the residents of their area; and
 - residents seek effectiveness and convenience when they use local services and participate in local democracy.

Determining councillor numbers in council areas

21. Our previous methodology for determining councillor numbers was based on population. Given the diversity found across the council areas in Scotland we categorised each council into one of 7 categories, and applied the same ratio of electors per councillor to all councils in a single category. This means we had different ratios of electors to councillors in, for example, Glasgow City and Na h-Eileanan an Iar.
22. Prior to the formal commencement of the Fifth Reviews of electoral arrangements, we conducted a public consultation in 2011 on how to determine councillor numbers for the Fifth Reviews. We consulted with the public, councils, MSPs, COSLA, political parties and other interested stakeholders. The responses to that consultation suggested that we should continue to take a consistent, objective and transparent approach to setting councillor numbers.
23. The responses generally indicated:
- no widespread support for a significant increase or decrease in councillor numbers;
 - support for the continued categorisation of councils so that a common ratio of electors to councillors applies to all councils with broadly similar characteristics;
 - support for a reduction in the number of categories from the 7 used previously;
 - suggestions of various factors, including deprivation and rurality, to be used in a transparent methodology for categorising councils which share common characteristics; and
 - support for minimum and maximum councillor numbers in a council area.
24. The methodology we adopted for the Fifth Reviews:
- used measures of population size as the key determinant of councillor numbers;

- used a categorisation which relied on population distribution and a composite measure capturing the socio-economic conditions in the council area;
- employed measures aligned with common indicators used by the Scottish Government;
- led to the creation of 5 categories of council area;
- introduced a more equal range of elector to councillor ratios from 800 to 3,800. Most councils range between 2,800 to 3,800 electors per councillor;
- maintained the minimum number of 18 councillors per council area and raised the maximum to 85; and
- set a cap on change in councillor numbers in any council area of 10%. This was designed to minimise disruption for a council's governance.

25. Overall, population size remained the key factor in determining councillor numbers. We considered that population dispersal is an important factor in determining councillor numbers but we also considered that socio-economic characteristics, and in particular the composite measure gathered by SIMD data, provide a reasonable indicator for a range of factors that impact on the work of councils and councillors.

26. We used settlements and population data from NRS and SIMD data for North Lanarkshire Council area. SIMD is determined independently by government statisticians in conjunction with the ScotStat Measuring Deprivation Advisory Group. SIMD combines weighted scores based on seven different dimensions of deprivation: employment, income, geographic access, crime, housing, health and education. We have used the 2012 SIMD dataset, the most recent available at the time we commenced work on categorisation. These datasets are calculated and published every 3 years by the Scottish Government.

27. For these reviews we maintained the minimum number of councillors at 18, as we considered this to be the minimum number of councillors to allow a council to operate effectively. However, we have extended the upper limit of councillors from 80 to 85 to increase the flexibility available to us and enable the ratios of electors to councillors to be more equal across Scotland in respect of the Fifth Reviews.

28. We were aware that a large change in councillor numbers in a council area could be disruptive to a council's governance, so we incorporated a 10% limit on change. This means that, as a rule, we have not proposed, as a result of our methodology for determining councillor numbers, to increase or decrease the total number of councillors in a council area by more than 10%.

29. We used cluster analysis to support our development of categories and placed each council area into 1 of 5 categories. We agreed on 5 categories to reflect Scotland's diverse demography, including levels of population dispersal and deprivation within council areas. The ratio of electors to councillors for each category, and the council areas we have placed in each, is shown in Table 1 below.

Table 1: Ratio of electors to councillors

Category	Criteria used to classify councils	Ratio	Council area
1	Less than 30% of the population living outwith settlements of 3,000 or more people AND 30% or more of the population living in the 15% most deprived datazones	2,800	Glasgow City Inverclyde
2	Less than 30% of the population living outwith settlements of 3,000 or more people AND 15% or more and less than 30% of the population living in the 15% most deprived datazones	3,000	Clackmannanshire Dundee City East Ayrshire North Ayrshire North Lanarkshire Renfrewshire West Dunbartonshire
3	Less than 30% of the population living outwith settlements of 3,000 or more people AND less than 15% of the population living in the 15% most deprived datazones	3,800	Aberdeen City Angus City of Edinburgh East Dunbartonshire East Lothian East Renfrewshire Falkirk Fife Midlothian South Ayrshire South Lanarkshire West Lothian
4	Between 30% and 59% of the population living outwith settlements of 3,000 or more people AND less than 15% of the population living in the 15% most deprived datazones	2,800	Aberdeenshire Argyll and Bute Dumfries and Galloway Highland Moray Perth and Kinross Scottish Borders Stirling
5	60% or more of the population living outwith settlements of 3,000 or more people AND less than 15% of the population living in the 15% most deprived datazones	800	Na h-Eileanan an Iar Orkney Islands Shetland Islands

30. The overall effect of our methodology is to retain core existing elements of the previous methodology but also introduce changes that would make the ratios of electors to councillors more equal across Scotland. The methodology also now draws on factors frequently used by the Scottish Government (such as the current measures for population distribution and the use of SIMD data that are used as policy tools) to categorise the council areas. This had the added benefit of not measuring the same factor twice, as was the case when using both population density and population distribution.

31. Our methodology placed North Lanarkshire Council area within category 2 (see Appendix C: Categorising Councils Matrix), as one of the more urban council

areas with below average deprivation, with a ratio of electors per councillor of 3,000.

Electorate data

32. At the start of the review, we obtained the electoral register as at 1 September 2013 from the Electoral Registration Officer for North Lanarkshire Council area. This dataset included postcodes, which allowed us to calculate the electorate for each postcode in the area under consideration, and hence for each proposed ward.
33. We used September 2013 electorate data because that was the most recent dataset available when we began work on the review. We used the local government electorate, that is those on the electoral register who are aged 18 and over and registered to vote in local government elections. The local government electorate at September 2013 was 250,035 in North Lanarkshire Council area.
34. In line with the rules governing reviews, when considering electoral parity we had regard to the likely change in the number and distribution of the local government electorate over a 5-year period immediately following our consideration of the electoral arrangements.
35. To assist us we asked North Lanarkshire Council to provide us with forecasts of new house building, residential property demolitions and institutional development (such as students' halls of residence) that are likely to be occupied within the next 5 years. North Lanarkshire Council provided us with data based on its 2012 Housing Land Audit, which documented expected new residential development.
36. From these datasets, combined with data on the average number of electors per dwelling in the area, we calculated a forecast electorate. We also used population projections from NRS. Using these, we scaled the forecast electorate to reflect the projected population change 5 years hence.
37. Fluctuations in population not incorporated into our forecasts will be taken into consideration in subsequent electoral reviews. The next electoral reviews are our interim reviews scheduled for 2021.

Ward design

38. The Local Governance (Scotland) Act 2004 specifies that each ward will return either 3 or 4 councillors. The choice of the number of councillors for each ward has been determined by the overall pattern of wards we considered to be appropriate for the area to deliver effective and convenient local government and to achieve good electoral parity.

Electoral parity

39. One of the principal aims of a review is to make recommendations that provide for a good level of electoral parity. Electoral parity means having the same number of electors per councillor in all wards in a council area.
40. Subject to effective and convenient local government, the legislation gives priority to electoral parity over other factors in ward design, except where special geographical circumstances apply.
41. We worked out the theoretical number of electors each councillor should represent by dividing the total number of electors in the council area in September 2013 by the proposed number of councillors. This produced a ratio of electors per councillor for each council area. The ratio allowed us to apply the requirement in the legislation that the number of electors per councillor is 'as nearly as may be' the same. A 3-member ward and 4-member ward would have 3 and 4 times this number of electors respectively.
42. Once we had calculated the number of electors per councillor, we measured how far the electorate in each ward deviated from that number. When formulating our recommendations, we sought to achieve ratios that were acceptable in every ward. We aimed to recommend wards that had a forecast electorate within a maximum 10% variation from parity, as suggested by the Venice Commission's 'Code of Good Practice in Electoral Matters'. We did not apply this measure as a strict numerical limit but instead this appeared to us to provide a reasonable degree of flexibility in most circumstances. In designing wards, we considered local circumstances as permitted by the legislation.

Local ties

43. When designing wards we aimed to avoid breaking local ties as far as permitted by the legislation.
44. Local ties can be defined by the location of public facilities such as doctors' surgeries, hospitals, libraries or schools. An area's history and tradition may be the basis of local ties. However, communities are constantly evolving and historical considerations may not have such importance in areas which have been subject to recent development or population dispersal. Major roads could be seen to be the focus of an area if they are the location of shops or community facilities which people visit regularly. Alternatively, major roads, rivers or railway lines could be seen as physical barriers between different communities.
45. In some areas, we have combined two or more distinct and separate communities within a single ward.
46. We also had regard to other recognised boundaries which may reflect local communities or local ties in designing ward boundaries. These boundaries could include those of community council areas, polling districts and primary school catchment areas.

Easily-identifiable boundaries

47. The legislation requires us to take into account the desirability of fixing boundaries that are and will remain easily-identifiable, but electoral parity and local ties take precedence.
48. In some areas, a case can be made to define ward boundaries along roads since they are likely to remain clearly identifiable, and are unlikely to be straddled by new dwellings. As an alternative, drawing a boundary along the rear fences between houses will result in neighbours across a street being in the same ward which may appropriately reflect local ties.
49. In some areas, natural features such as watercourses and edges of woodland may be appropriate. In upland areas, a watershed may be an appropriate ward boundary feature, particularly along narrow, well-defined ridges.
50. Ward boundaries have also been standardised where appropriate to follow road centrelines and river/waterway centrelines in order to create more easily-identifiable ward boundaries.

Special geographical considerations

51. We can depart from strict adherence to electoral parity for a ward where there are special geographical considerations that make it desirable to do so. These considerations can apply to socio-economic factors as well as to physical geography. Such considerations could include any areas where transport and communication links are slow, infrequent or subject to interference by the weather and seasons. Examples would be islands, sparsely populated areas and remote areas.

Other factors

52. It is important to note that our reviews are concerned only with electoral matters. Issues such as addresses, postcodes, community council boundaries and school catchment areas are all decided by other bodies and do not change as a direct consequence of ward boundary changes.

Consultation

53. Our approach to conducting the Fifth Reviews was one of engagement and openness. We publicised the review widely, and asked that councils do the same. Legislation governing the conduct of reviews is at Appendix D. At the start of the reviews we met all 32 councils individually to discuss our proposals for councillor numbers.
54. The legislation requires us to consult with councils for a 2-month period and to take into consideration their views prior to consulting publicly on proposals. We conducted a two-stage consultation, firstly for councillor numbers, and secondly for our ward proposals.

55. When publicising the consultations we issued a news release, placed public notices in the local press and supplied materials for councils to make available at council-nominated display points. We also used Facebook, Twitter and our website for publicity and asked councils to publicise the reviews on their websites.
56. The local press used in North Lanarkshire Council area were the the 'Airdrie & Coatbridge Advertiser', 'Bellshill Speaker', 'Cumbernauld News', 'Hamilton Advertiser', 'Kilsyth Chronicle', 'Kirkintilloch Herald', 'Motherwell Times', 'West Lothian Courier' and 'Wishaw Press'.
57. The display points agreed with North Lanarkshire Council were located in: North Lanarkshire Council offices in Bellshill and Motherwell, as well as Airdrie Library, Coatbridge Library, Cumbernauld Library, Kilsyth Library, Moodiesburn Library, Shotts Library and Wishaw Library.
58. We also wrote to a wide range of interested parties including MSPs, MPs, political parties, community councils, COSLA and other representative bodies to inform them of the consultations.
59. Our public consultation portal allowed users to view maps and background information and to submit responses, including alternative suggestions during the public consultation phases of the reviews.
60. All responses to the consultations were fully considered by us and the papers and minutes recording our deliberations and decisions are published on our website: www.lgbc-scotland.gov.uk.

Part 2 Conducting the Review

Councillor numbers

61. Our methodology placed North Lanarkshire Council area within category 2, as one of the more urban council areas with above average deprivation, with a ratio of electors per councillor of 3,000. Using the ratio of 3,000 resulted in councillor numbers of 83 for North Lanarkshire Council area.
62. As there were 70 councillors in North Lanarkshire Council area under existing arrangements we applied a 10% cap on change, as set out in our methodology, and so initially proposed 77 councillors for North Lanarkshire Council area, 7 more than at present.

Consultation with North Lanarkshire Council

63. We wrote to North Lanarkshire Council on 21 February 2014 announcing the start of the Fifth Reviews, providing background information and setting out our proposals for councillor numbers. The letter set out that we were consulting with the council on these proposals for a period of 2 months ending on 23 April 2014.
64. On 3 March 2014, we met the council to explain the review process, the methodology for the determination of councillor numbers and the proposed number of councillors for North Lanarkshire Council area.
65. In its responses to the consultation on councillor numbers, the council initially supported our proposals.
66. We considered the council's response at our meeting of 1 May 2014 (see LGBCS Paper 2217/14 and minute of meeting M355) and decided to consult with the public on the same proposals for councillor numbers.

Consultation with the public

67. We consulted with the public on our proposals for councillor numbers between 29 May and 21 August 2014.
68. There were 3 responses to the public consultation for North Lanarkshire Council which can be found on our website. They all opposed an increase in councillor numbers.
69. North Lanarkshire Council withdrew its earlier submission and stated it believed there is no evidence to suggest that additional councillors will effectively tackle issues of deprivation, raised concerns that additional councillors will result in significant electoral disparity and numerous changes to existing ward boundaries, breaking local community ties and warned of the cost of seven additional councillors when the council is trying to make financial savings. They wished to retain the existing electoral arrangements.

70. We received 2 responses for all council areas in Scotland and these are available on our website.

71. We considered the views expressed by respondents to the public consultation in North Lanarkshire Council area. We also considered the views expressed by other councils, COSLA and other interested parties across Scotland concerning our proposed methodology.

72. Our response to the consultation on councillor numbers is summarised in our statement on councillor numbers published in October 2014 (available on our website), which:

- explained our methodology;
- set out our view that the previously-used categorisation based on population distribution and population density was an incomplete model of the demands on councillors;
- noted a lack of evidence supporting the sole use of population distribution and population density to determine the ratio of councillors to electors; and
- stated our case that using deprivation and population distribution appears to remain a reasonable model for us to adopt in discharging our statutory responsibility to make recommendations in the interests of effective and convenient local government.

73. For these reasons we were content to confirm our use of the methodology at our meeting of 10 September 2014 (see LGBCS 2228/14 and minute of meeting M358).

Ward design

74. We discussed our ward proposals for North Lanarkshire Council area at our meeting on 18 December 2014 (see LGBCS Paper 2264/14 and minute of meeting M362) and decided on our proposals at our meetings of 3 February 2015 and 3 March 2015 (see LGBCS Paper 2276/15 and minutes of meetings M364 and M365).

75. Our proposals for North Lanarkshire Council area presented an electoral arrangement for 77 councillors representing 7 3-member wards and 14 4-member wards, increasing the number of wards in the area by 1 and increasing councillor numbers by 7. The proposals:

- addressed forecast disparities in existing ward 5 (Strathkelvin);
- made changes to ward boundaries throughout the council area but made no changes to existing wards 1 (Kilsyth), 2 (Cumbernauld North), 15 (Mossend and Holytown), 16 (Motherwell West), 17 (Motherwell North) and 18 (Motherwell South East and Ravenscraig); and
- proposed new ward names: Coatbridge North; Cumbernauld South and Luggiebank; Abronhill, Kildrum, Seafar and The Village; Chryston, Moodiesburn and Stepps North; Glenboig, Muirhead and Stepps South; and Thorniewood and Shirrel; but made no changes to other ward names.

Consultation with North Lanarkshire Council

76. We consulted North Lanarkshire Council on our ward proposals between 19 March and 19 May 2015.
77. The council responded to the consultation on 29 May 2015 setting out that it opposed the proposals.
78. We reviewed our ward proposals for North Lanarkshire Council area at our meeting of 7 July 2015 (see LGBCS Paper 2326/15 and minute of meeting M368). We noted that the geography of the council area placed significant constraints on ward design, particularly around the existing ward 5 (Strathkelvin) where a wide variation of electoral parity is forecast. We noted the Council's points as regards local ties, and considered alternative sets of proposals for 75 and 76 councillors (1 and 2 councillors fewer than that suggested by our methodology). The Commission noted that the options addressed only some of the issues raised by the council regarding breaking local ties and worsened electoral parity compared to its proposals. We noted that the increase in the number of councillors proposed for North Lanarkshire had been constrained by the limit on changes in councillor numbers to 10%, and were reluctant to recommend a lower number of councillors. We also noted the council had not offered an alternative suggestion.

Consultation with the public

79. We wrote to North Lanarkshire Council to inform it that the consultation with the public on proposals for wards would begin on 30 July and run until 22 October 2015. The council was invited to submit a further response during the public consultation.
80. On 30 July 2015 we announced a 12-week period of consultation with the public on our ward proposals for North Lanarkshire Council area which retained our proposals.
81. On 22 October 2015 the consultation period with the public ended. 483 responses relating to North Lanarkshire Council area were received during the public consultation, which can be found on our website. The main theme to emerge was: opposition to the proposals that placed Cairnhill within a Coatbridge ward, rather than the existing Airdrie Central ward.
82. During the public consultation, the council re-submitted its earlier response on the proposals.
83. We received 3 responses for all council areas in Scotland and these are available on our website.

Development of our final recommendations

84. On 9 November and 8 December 2015 (see LGBCS Paper 2346/15 and minutes of meetings M371 and M372) we considered all responses received during the consultations.

85. We discussed further options for North Lanarkshire Council area. We did not receive any ward suggestions for North Lanarkshire Council area during the public consultation on Ward Proposals but considered an alternative option which addressed some of the issues raised during the public consultation whilst still being mindful of the requirement for electoral parity. The alternative option retained local ties in Cairnhill, Stepps and Cleland and also retained Shirrel within a Bellshill ward and aimed to minimise change to the electoral arrangements within the constraints of 7 additional councillors. Our proposals also addressed forecast electoral parity in the existing ward 5 (Strathkelvin).
86. We agreed that this option was a reasonable alternative to our earlier proposals and that it did not differ radically from the status quo. We acknowledged that it was difficult to find a suitable solution to ward design by Glenboig due to the expected population growth in the existing Strathkelvin ward.
87. We considered changes to the names of some of the wards we had provisionally agreed for North Lanarkshire Council area. We agreed to name the proposed ward 4 as 'Cumbernauld East' as it offered a name that is consistent with the other Cumbernauld ward names and reflects the ward area.
88. We considered that the information we had available was sufficient to reach a decision for North Lanarkshire Council area that would provide for effective and convenient local government and that there was not a need for further consultation or local inquiry.
89. On 19 April 2016 (see LGBCS Paper 2395/16 and minute of meeting M377) we confirmed our Final Recommendations for North Lanarkshire Council area as set out in Part 3.
90. All papers and minutes of meetings relating to our consideration of North Lanarkshire Council area are available on our website: www.lgbc-scotland.gov.uk.
91. The timetable for the Fifth Reviews of Electoral Arrangements is set out at Appendix E. An index of our meetings, papers and minutes concerning North Lanarkshire Council is at Appendix F.

Part 3 Final Recommendation for North Lanarkshire Council area

92. We recommend that in the interests of effective and convenient local government the future electoral arrangements for North Lanarkshire Council area should provide for a council of 77 councillors in 21 wards, comprising 14 wards each returning 4 members and 7 wards each returning 3 members as follows:

Ward no.	Ward name	Councillors	Electorate Sept 13	Actual variation from parity	Forecast electorate	Forecast variation from parity
1	Kilsyth	3	9,206	-5%	9,571	-2%
2	Cumbernauld North	4	13,448	4%	13,619	5%
3	Cumbernauld South	4	12,476	-4%	12,149	-7%
4	Cumbernauld East	4	12,808	-1%	13,037	0%
5	Stepps, Chryston and Muirhead	3	8,530	-12%	9,417	-3%
6	Glenboig and Moodiesburn	3	9,132	-6%	10,164	4%
7	Coatbridge North	4	11,843	-9%	11,693	-10%
8	Airdrie North	4	14,015	8%	13,824	6%
9	Airdrie Central	4	12,496	-4%	12,048	-7%
10	Coatbridge West	3	9,930	2%	9,563	-2%
11	Coatbridge South	4	12,166	-6%	12,072	-7%
12	Airdrie South	4	14,281	10%	13,840	6%
13	Fortissat	4	11,701	-10%	11,849	-9%
14	Thorniewood	3	10,478	8%	10,334	6%
15	Bellshill	4	12,304	-5%	11,813	-9%
16	Mossend and Holytown	3	9,438	-3%	9,796	0%
17	Motherwell West	3	10,618	9%	10,302	6%
18	Motherwell North	4	13,426	3%	13,716	5%
19	Motherwell South East and Ravenscraig	4	13,475	4%	13,847	6%
20	Murdostoun	4	14,303	10%	13,789	6%

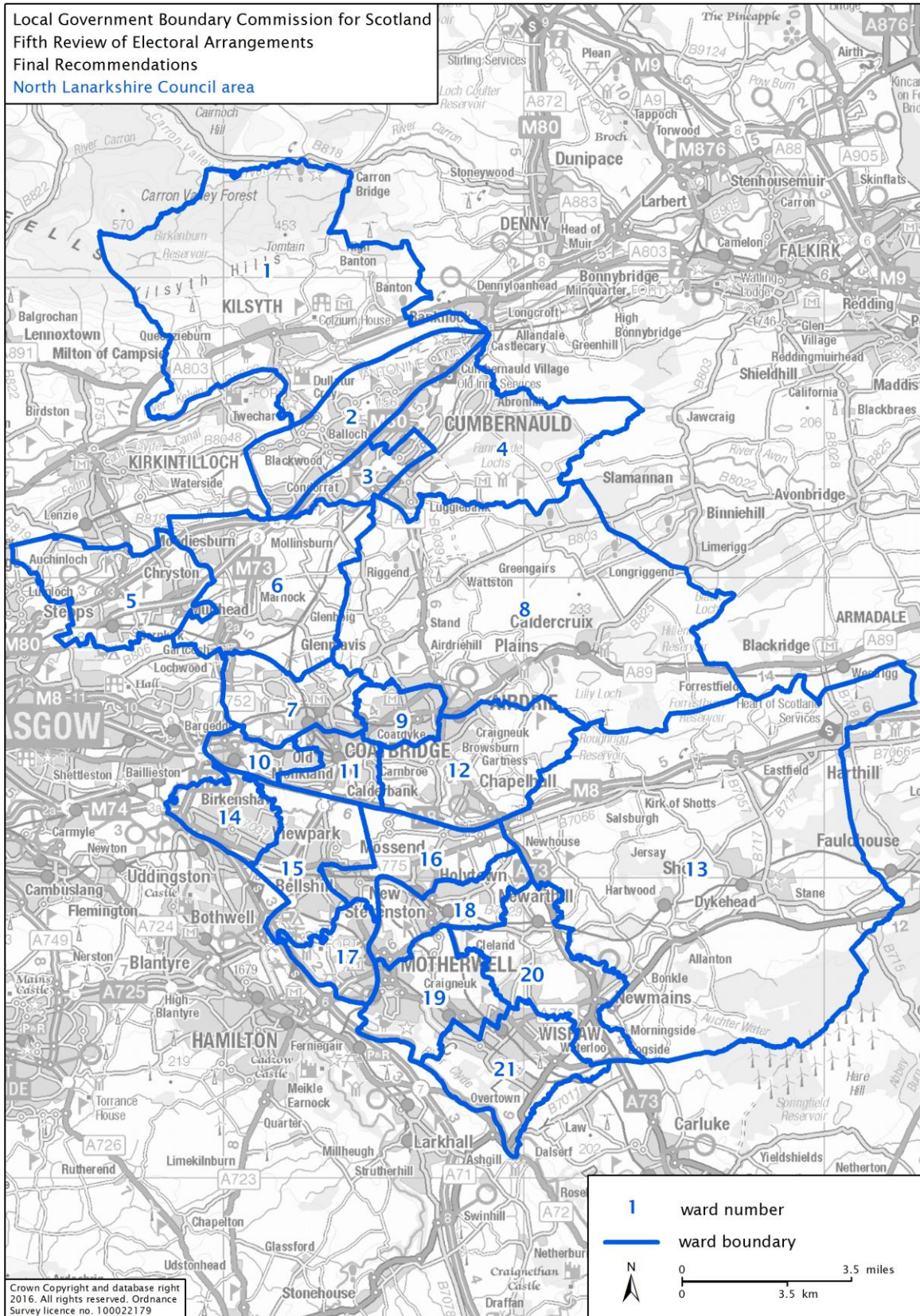
21	Wishaw	4	13,961	7%	13,977	7%
	Totals	77	250,035	6%	250,420	6%

93. A digitised description of the ward boundaries in the form of GIS shapefiles has been securely stored on magnetic media at the date of publication of our report.

94. Our report has also been deposited for public inspection at offices designated by the council and a news release announcing the publication of our report has also been issued.

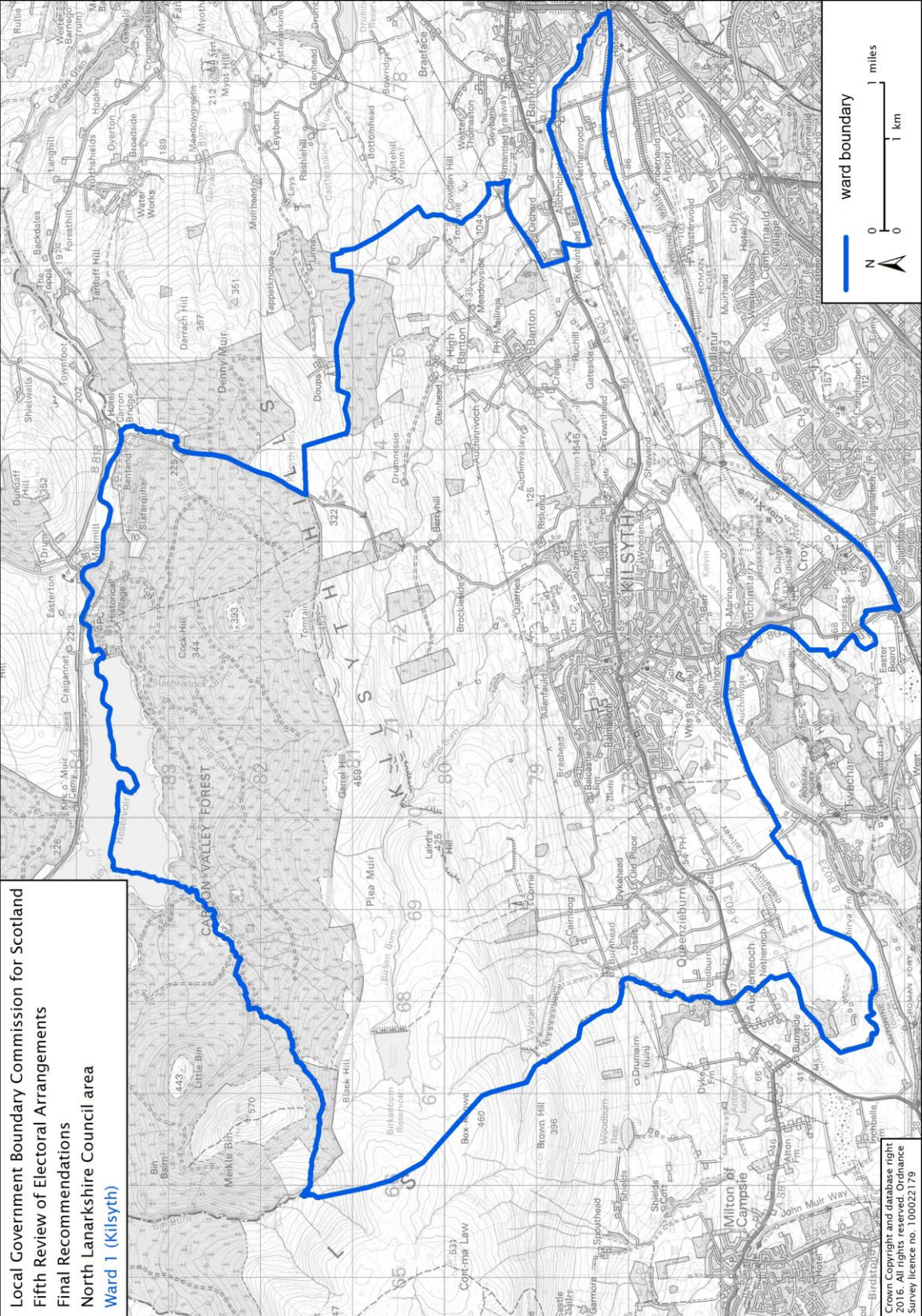
95. Our report is available on our website at www.lgbc-scotland.gov.uk.

Local Government Boundary Commission for Scotland
 Fifth Review of Electoral Arrangements
 Final Recommendations
 North Lanarkshire Council area

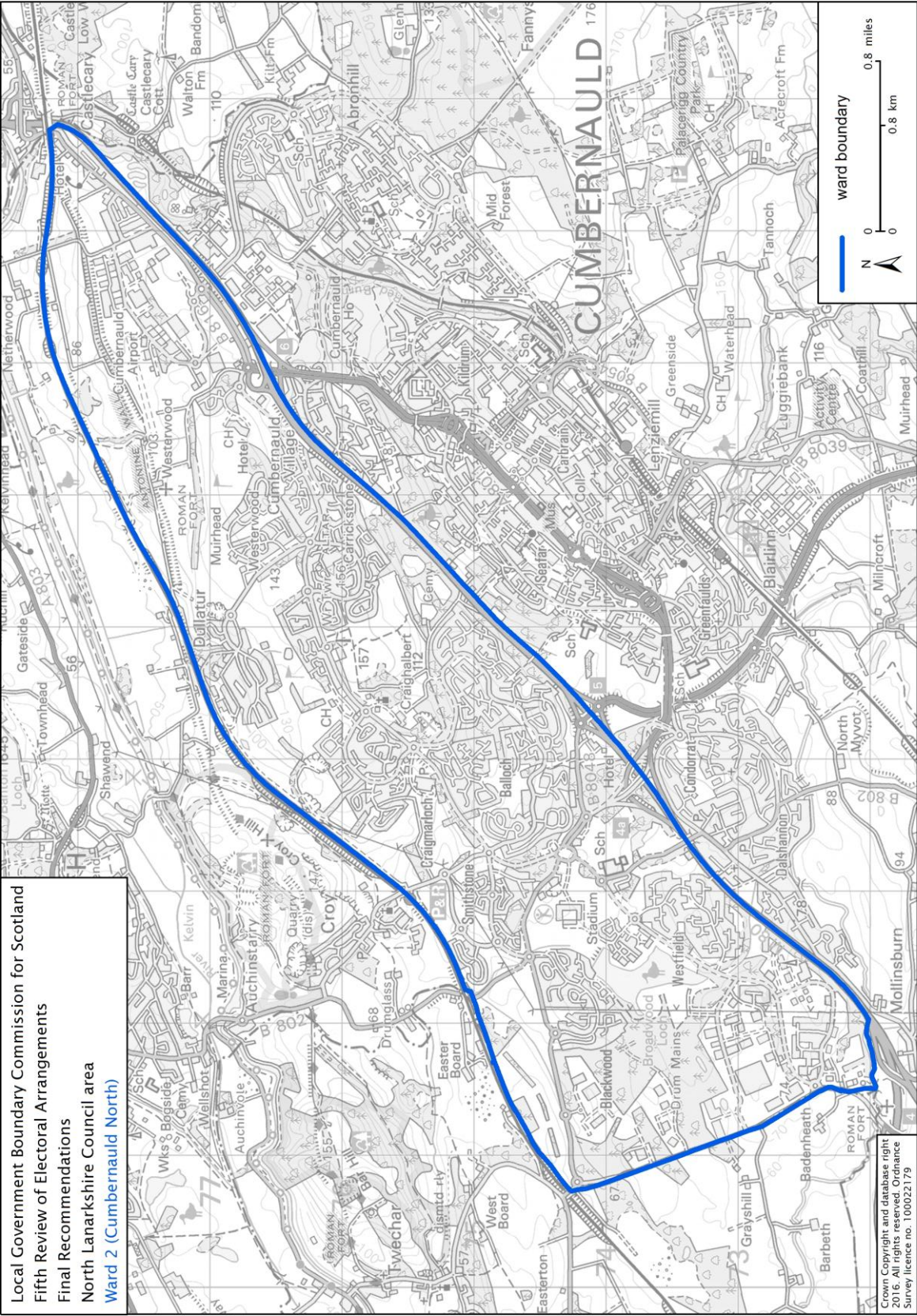


Crown Copyright and database right 2016. All rights reserved. Ordnance Survey licence no. 100022179

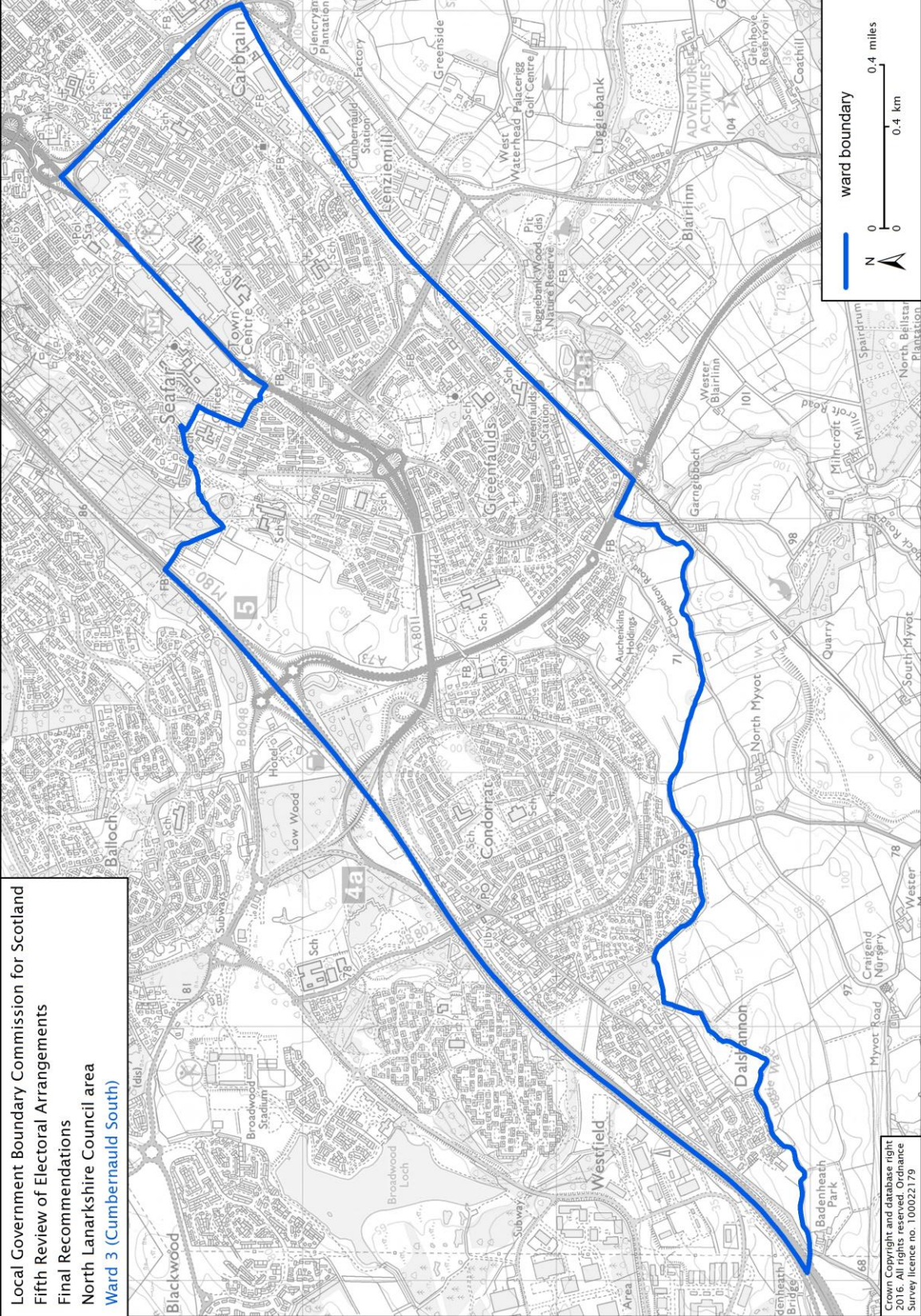
Local Government Boundary Commission for Scotland
 Fifth Review of Electoral Arrangements
 Final Recommendations
 North Lanarkshire Council area
 Ward 1 (Kilsyth)



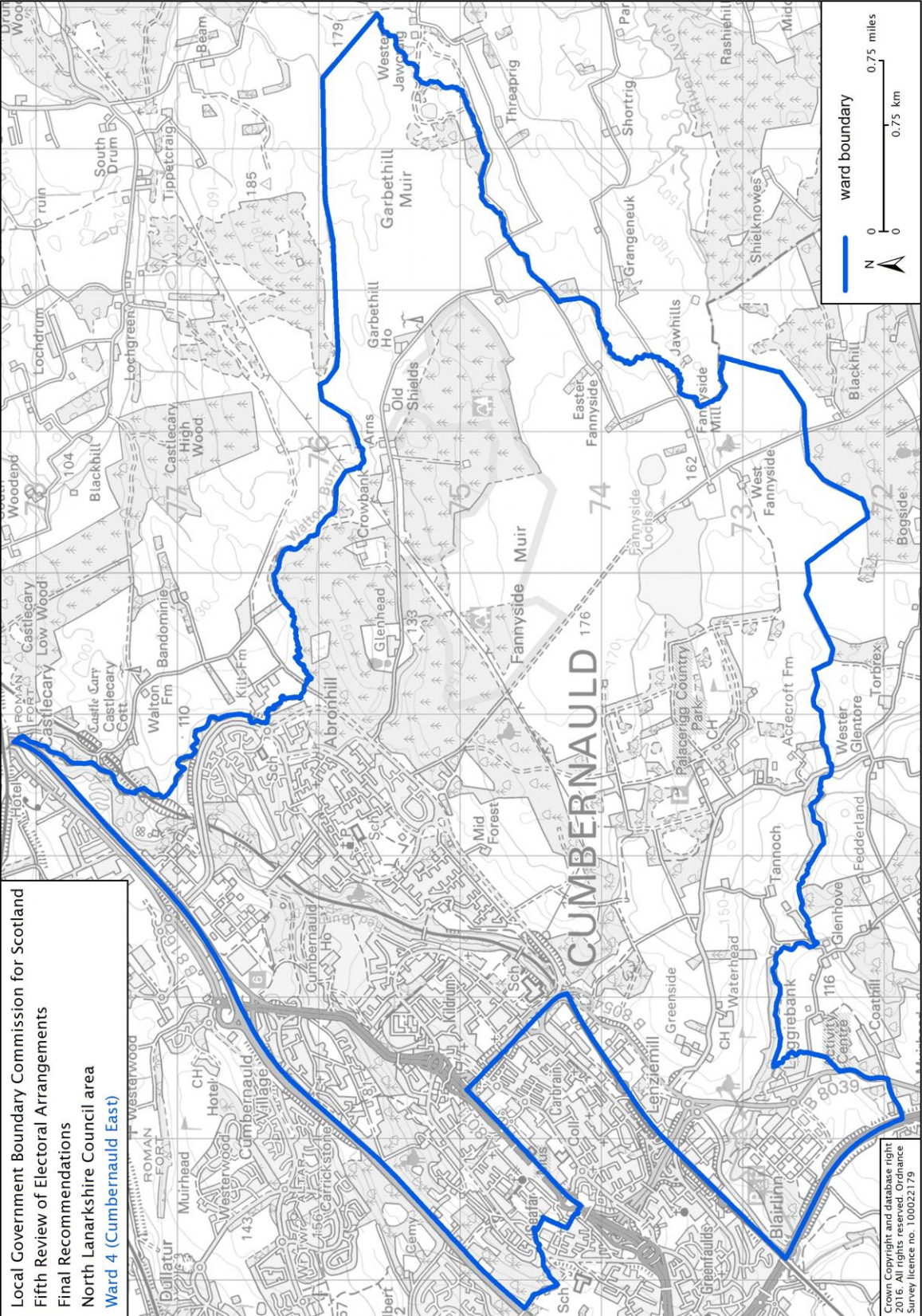
Crown Copyright and database right
 2016. All rights reserved. Ordnance
 Survey licence no. 100022179

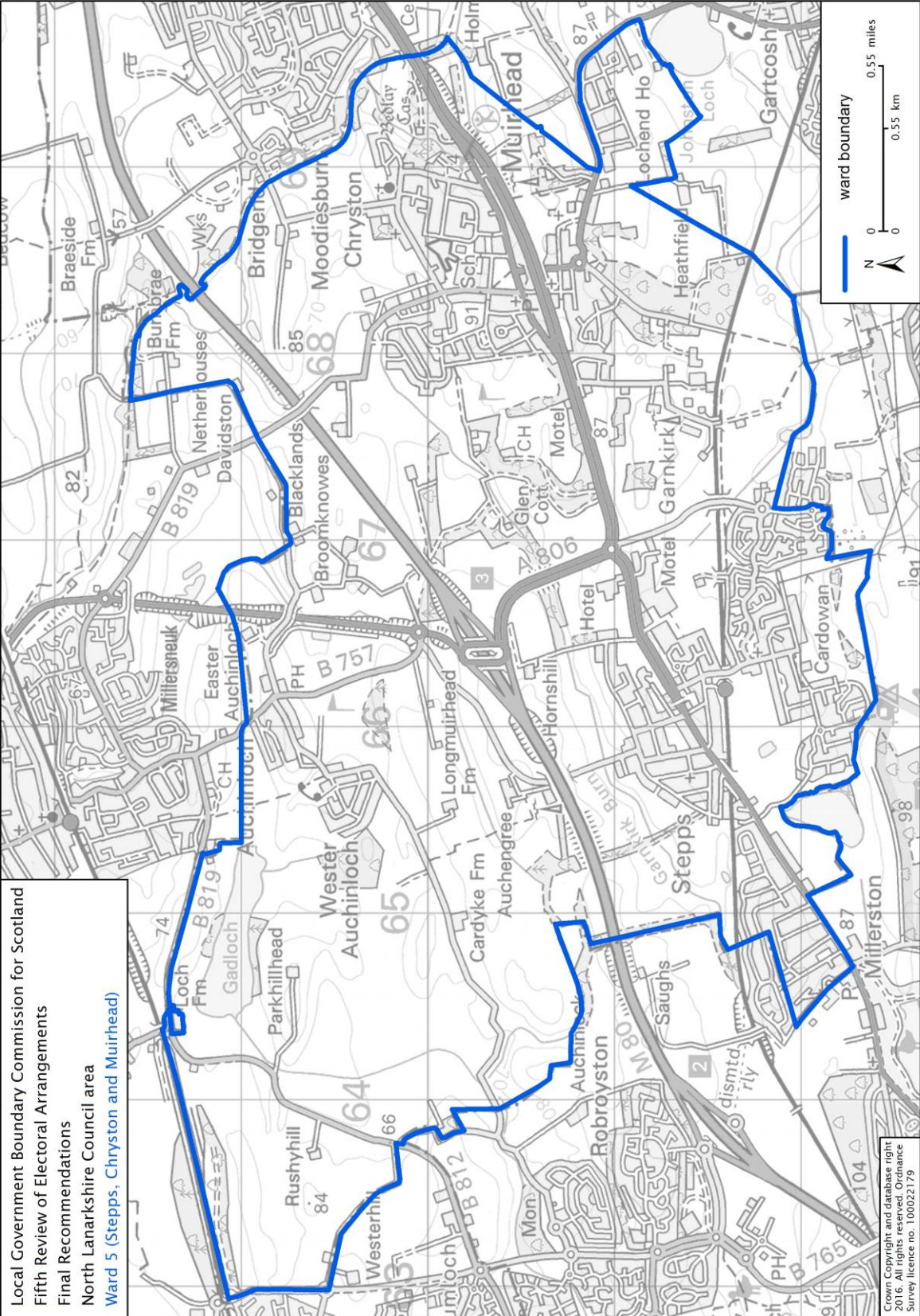


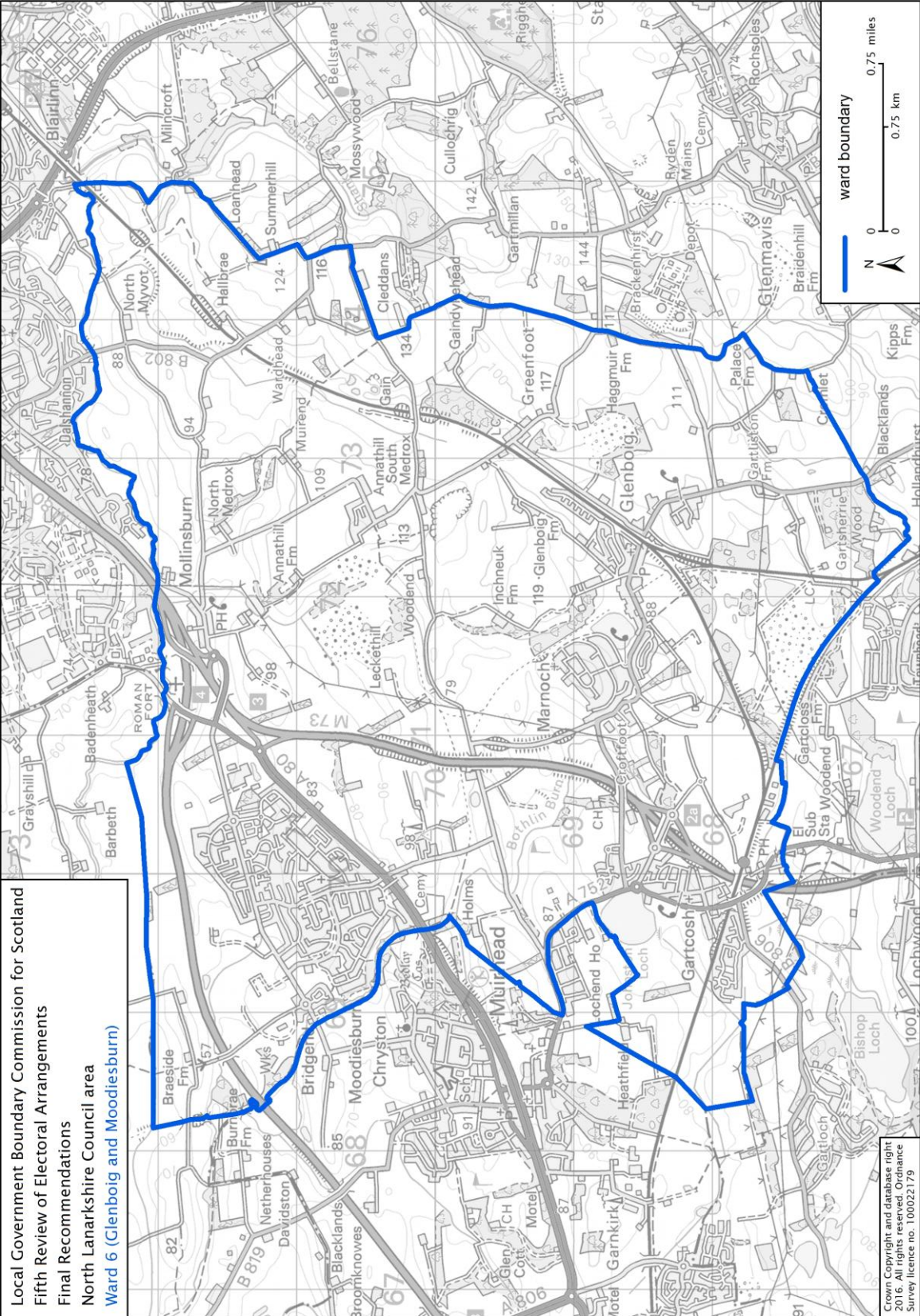
Local Government Boundary Commission for Scotland
 Fifth Review of Electoral Arrangements
 Final Recommendations
 North Lanarkshire Council area
 Ward 3 (Cumbernauld South)

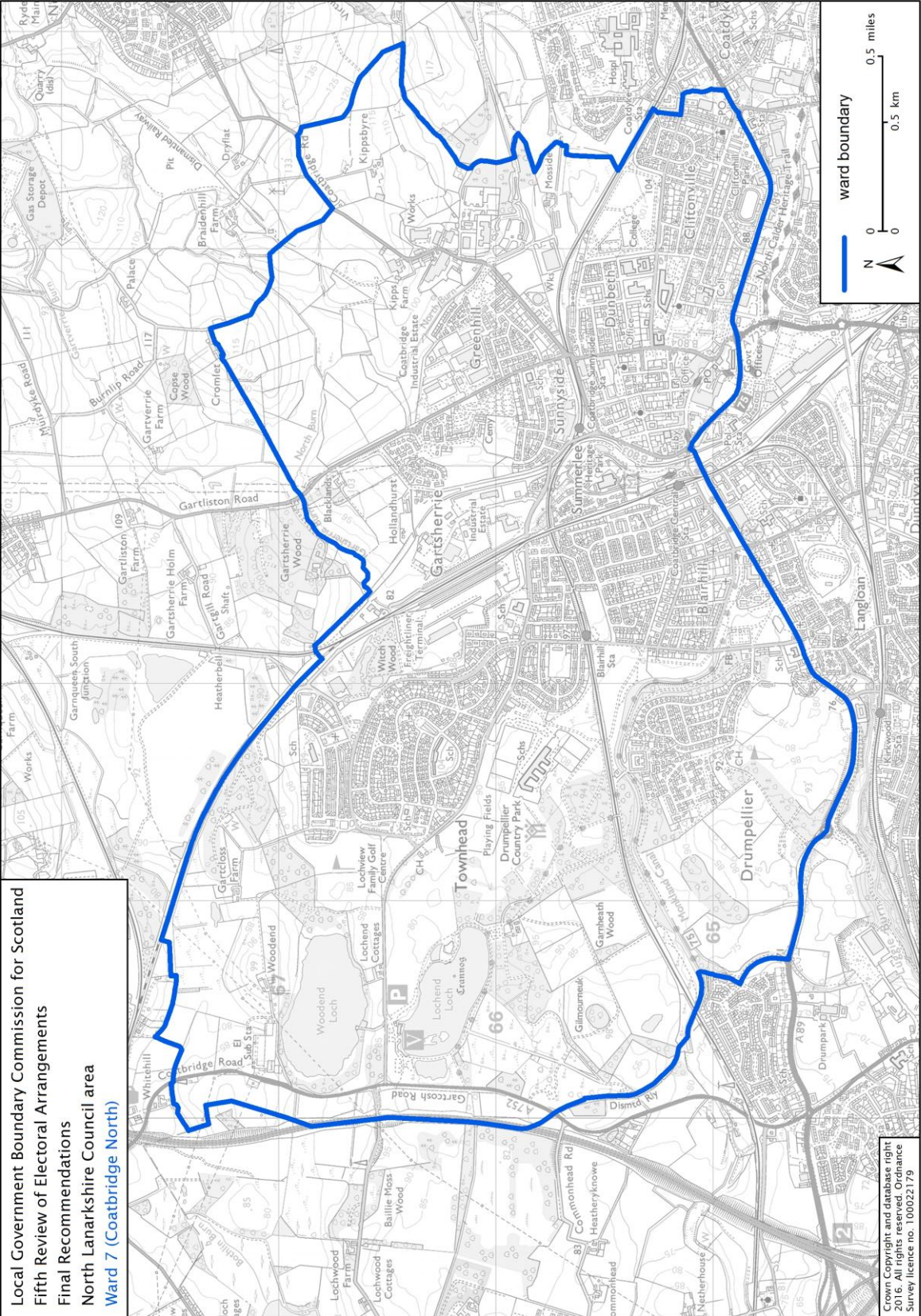


Local Government Boundary Commission for Scotland
 Fifth Review of Electoral Arrangements
 Final Recommendations
 North Lanarkshire Council area
 Ward 4 (Cumbernauld East)

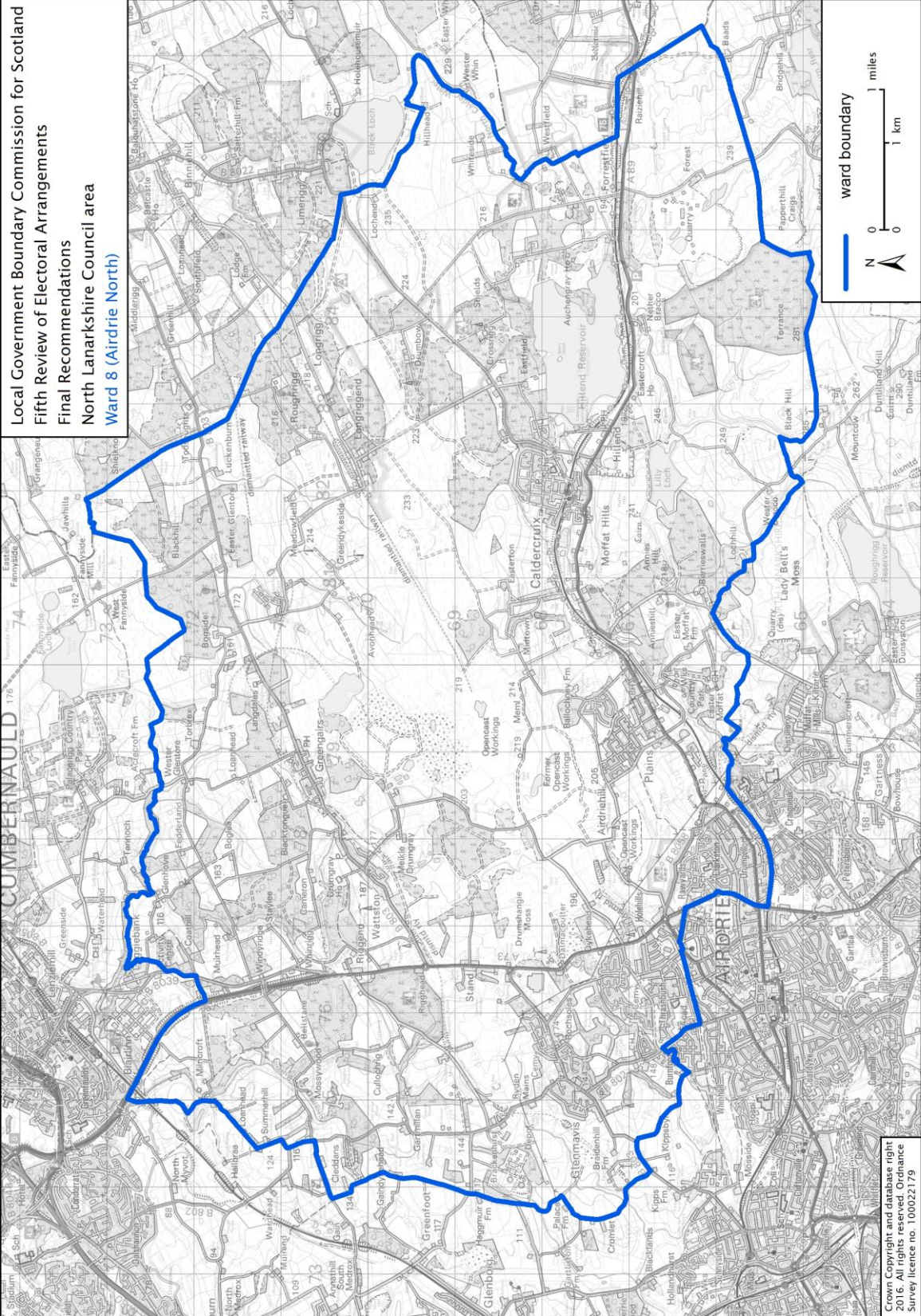






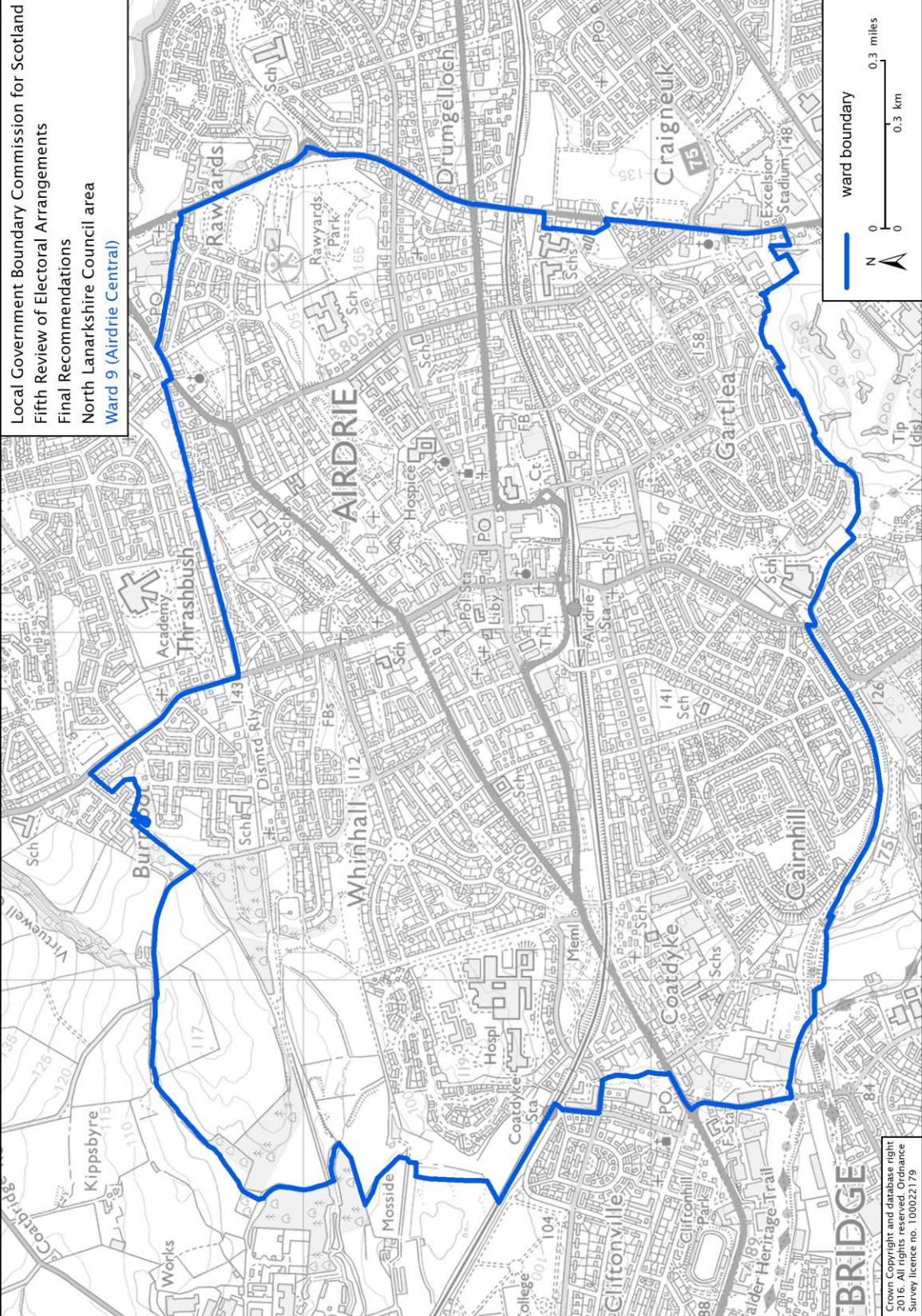


Local Government Boundary Commission for Scotland
 Fifth Review of Electoral Arrangements
 Final Recommendations
 North Lanarkshire Council area
 Ward 8 (Airdrie North)

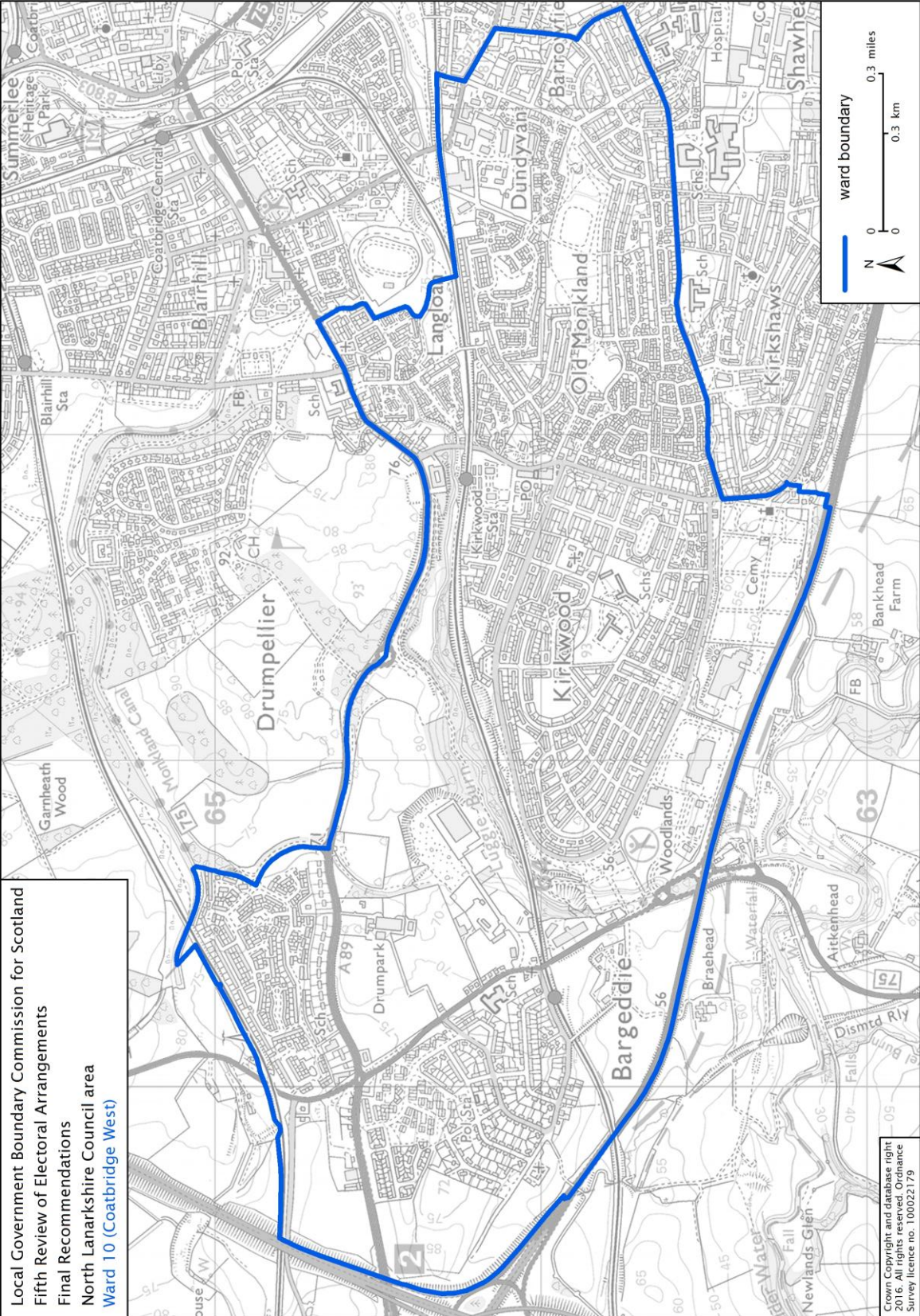


Crown Copyright and database right
 2015. All rights reserved. Ordnance
 Survey licence no. 100022179

Local Government Boundary Commission for Scotland
 Fifth Review of Electoral Arrangements
 Final Recommendations
 North Lanarkshire Council area
 Ward 9 (Airdrie Central)



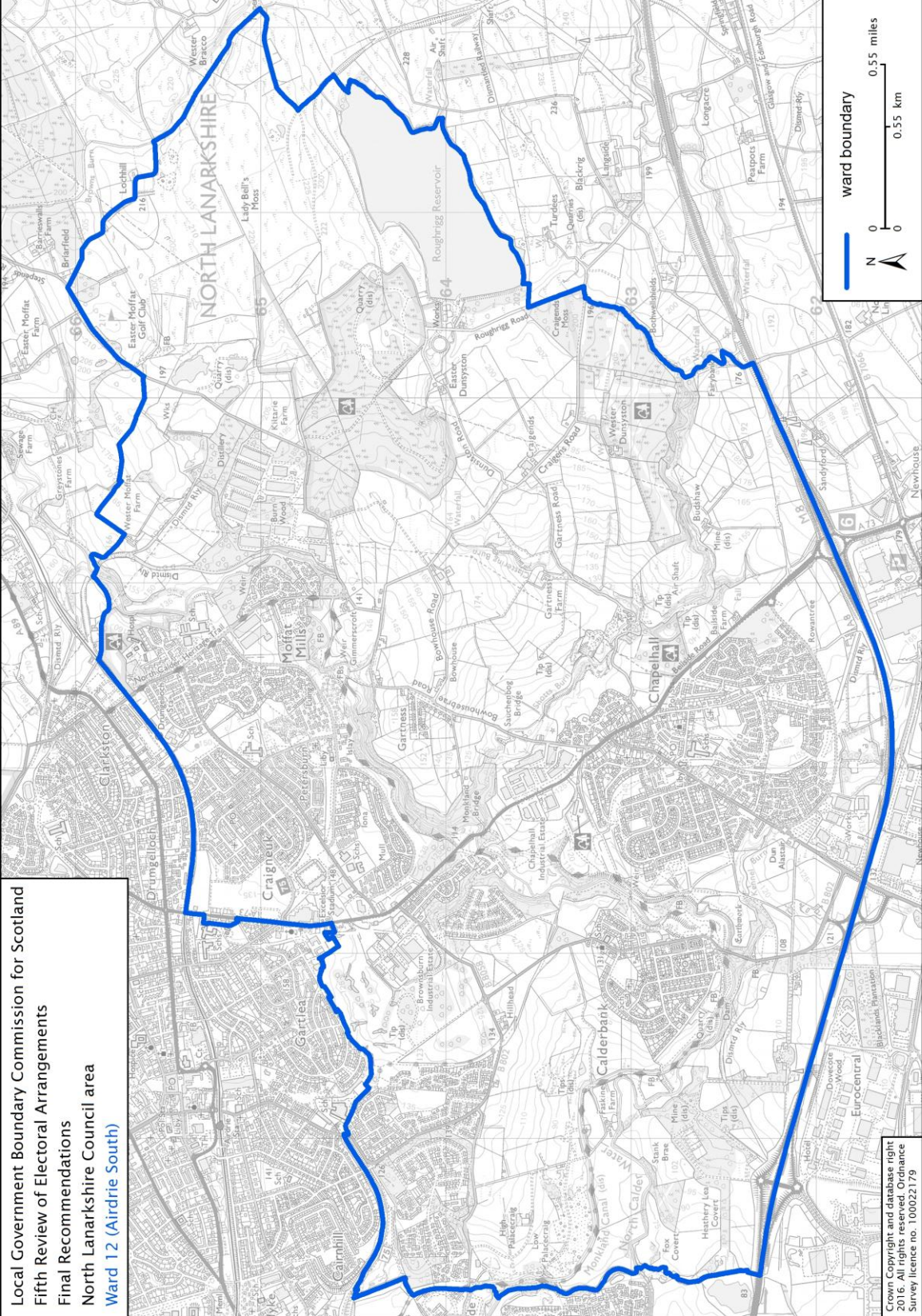
Crown Copyright and database right
 2015. All rights reserved. Ordnance
 Survey licence no. 100022179



Local Government Boundary Commission for Scotland
 Fifth Review of Electoral Arrangements
 Final Recommendations
 North Lanarkshire Council area
 Ward 10 (Coatbridge West)

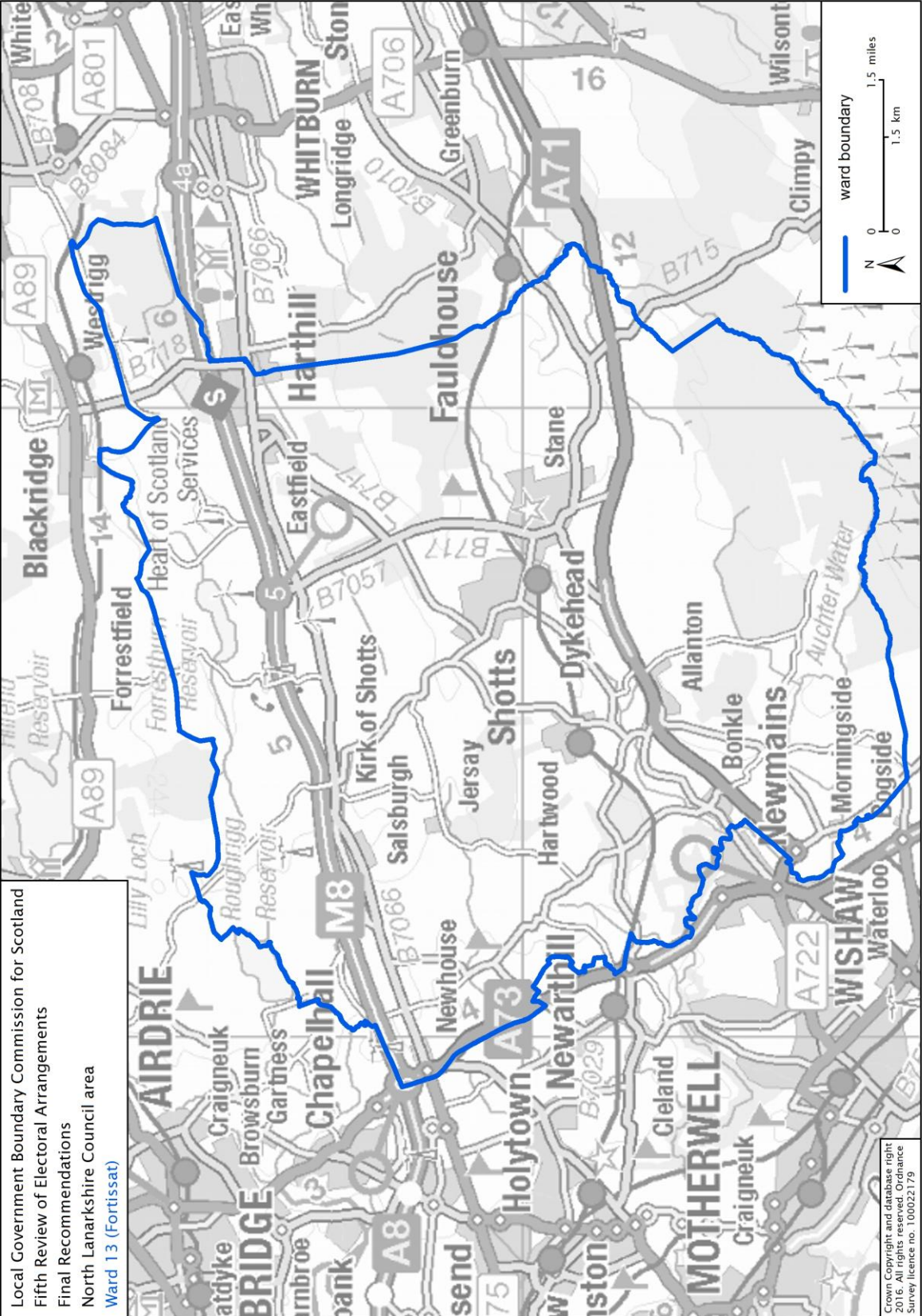
© Crown Copyright and database right
 2015. All rights reserved. Ordnance
 Survey licence no. 100022179

Local Government Boundary Commission for Scotland
 Fifth Review of Electoral Arrangements
 Final Recommendations
 North Lanarkshire Council area
 Ward 12 (Airdrie South)

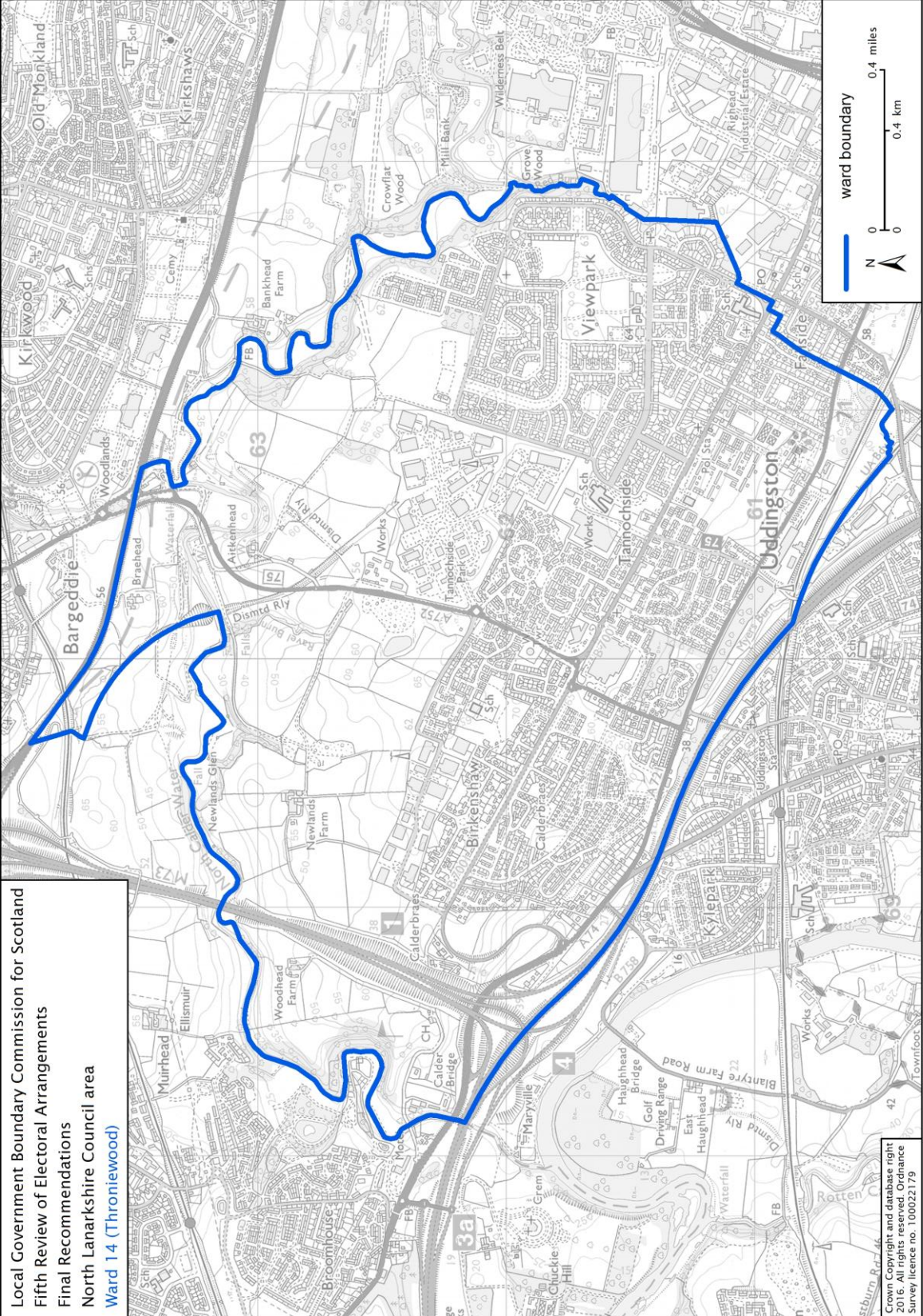


Ordnance Survey
 Crown Copyright and database right
 2015. All rights reserved. Ordnance
 Survey licence no. 100022179

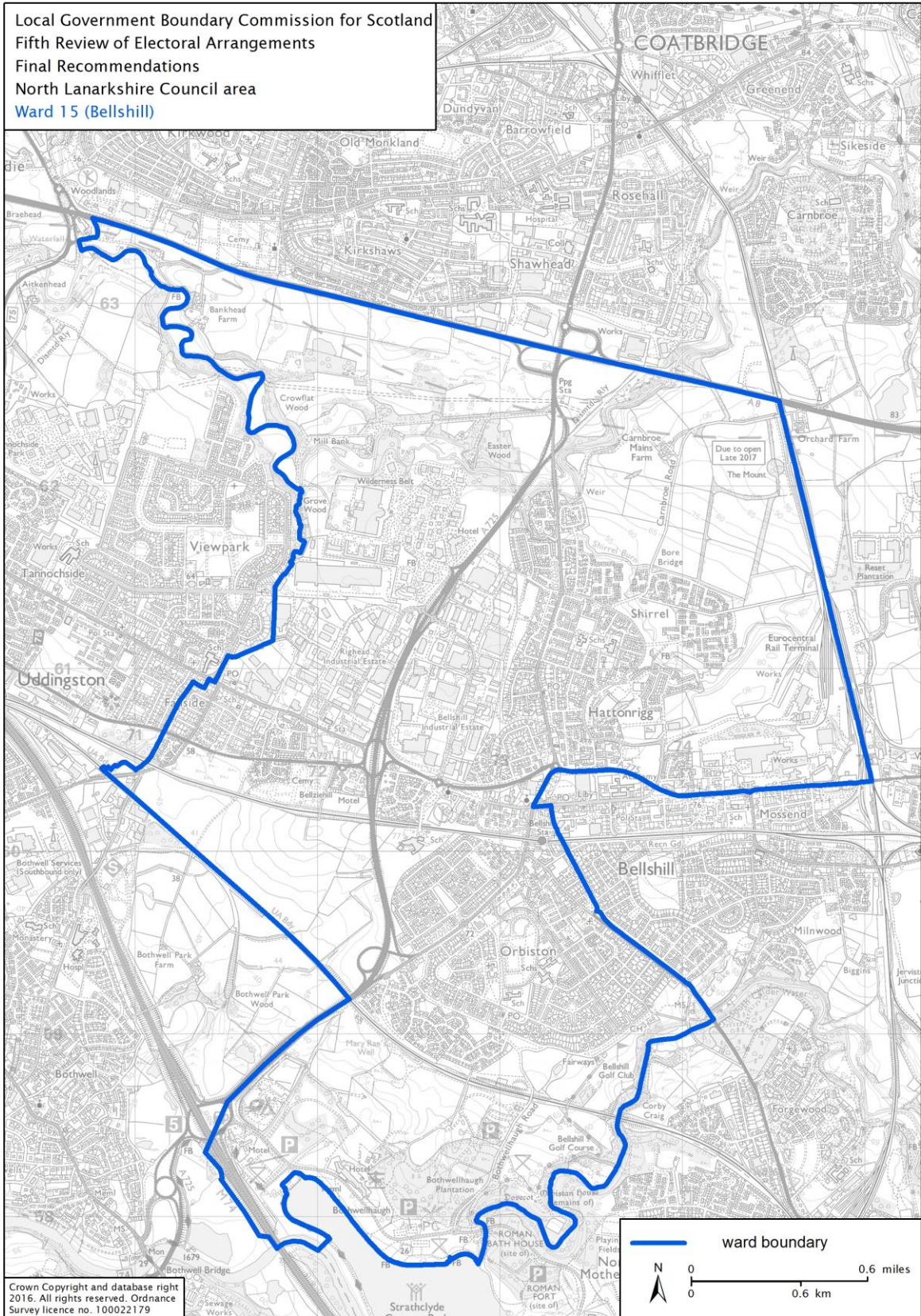
Local Government Boundary Commission for Scotland
 Fifth Review of Electoral Arrangements
 Final Recommendations
 North Lanarkshire Council area
 Ward 13 (Fortissat)



Local Government Boundary Commission for Scotland
 Fifth Review of Electoral Arrangements
 Final Recommendations
 North Lanarkshire Council area
 Ward 14 (Thorniewood)

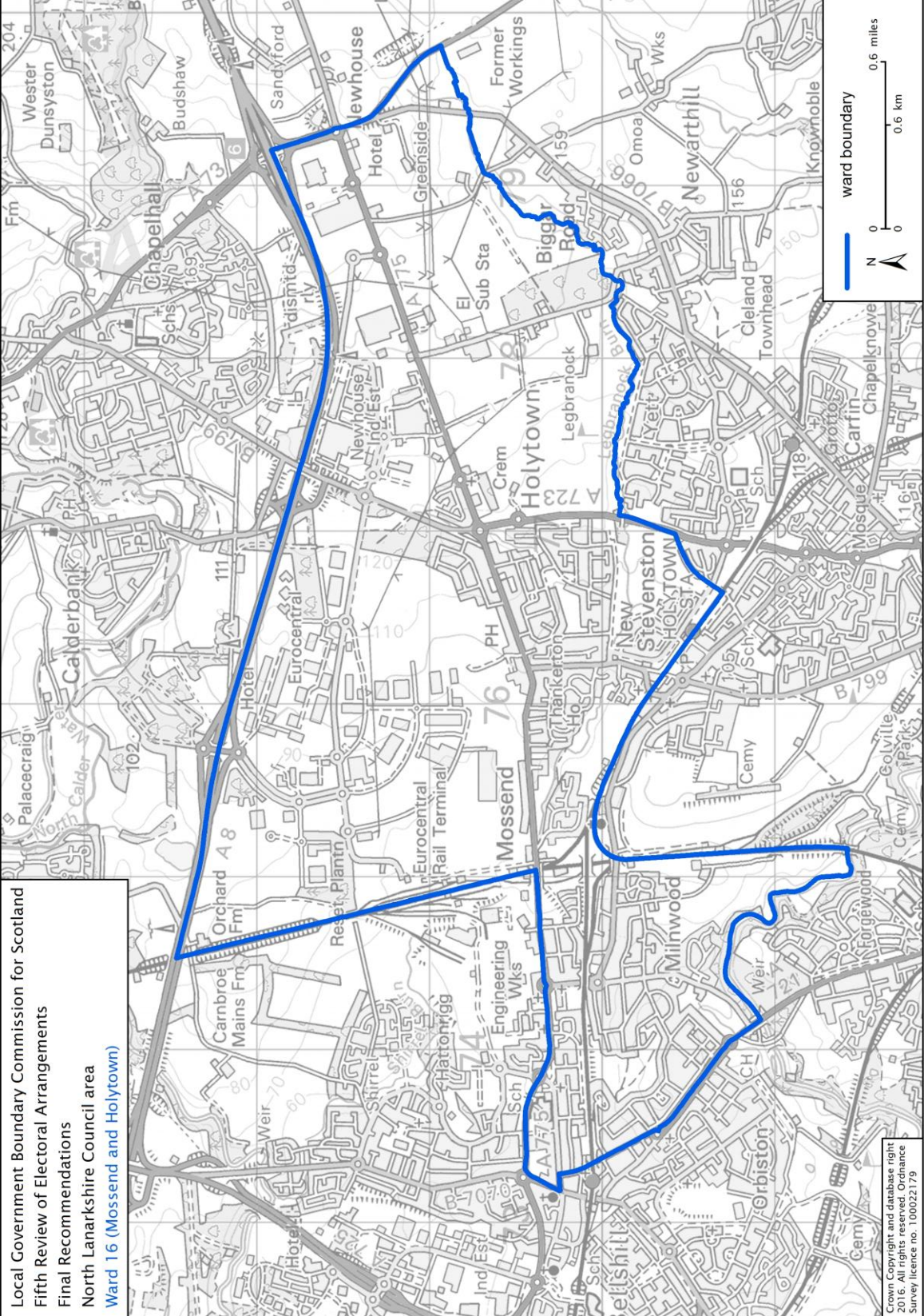


Local Government Boundary Commission for Scotland
 Fifth Review of Electoral Arrangements
 Final Recommendations
 North Lanarkshire Council area
 Ward 15 (Bellshill)

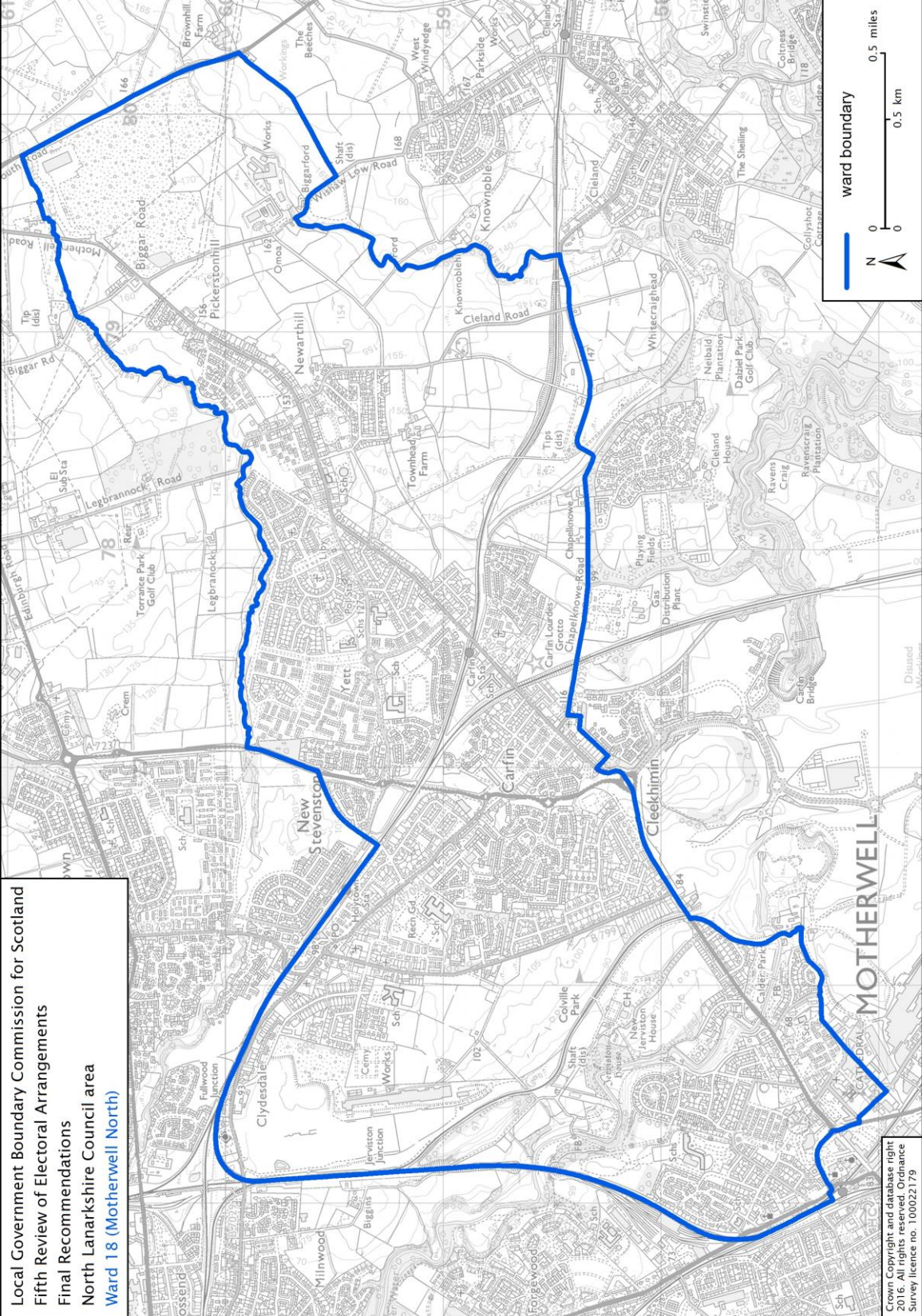


Crown Copyright and database right
 2016. All rights reserved. Ordnance
 Survey licence no. 100022179

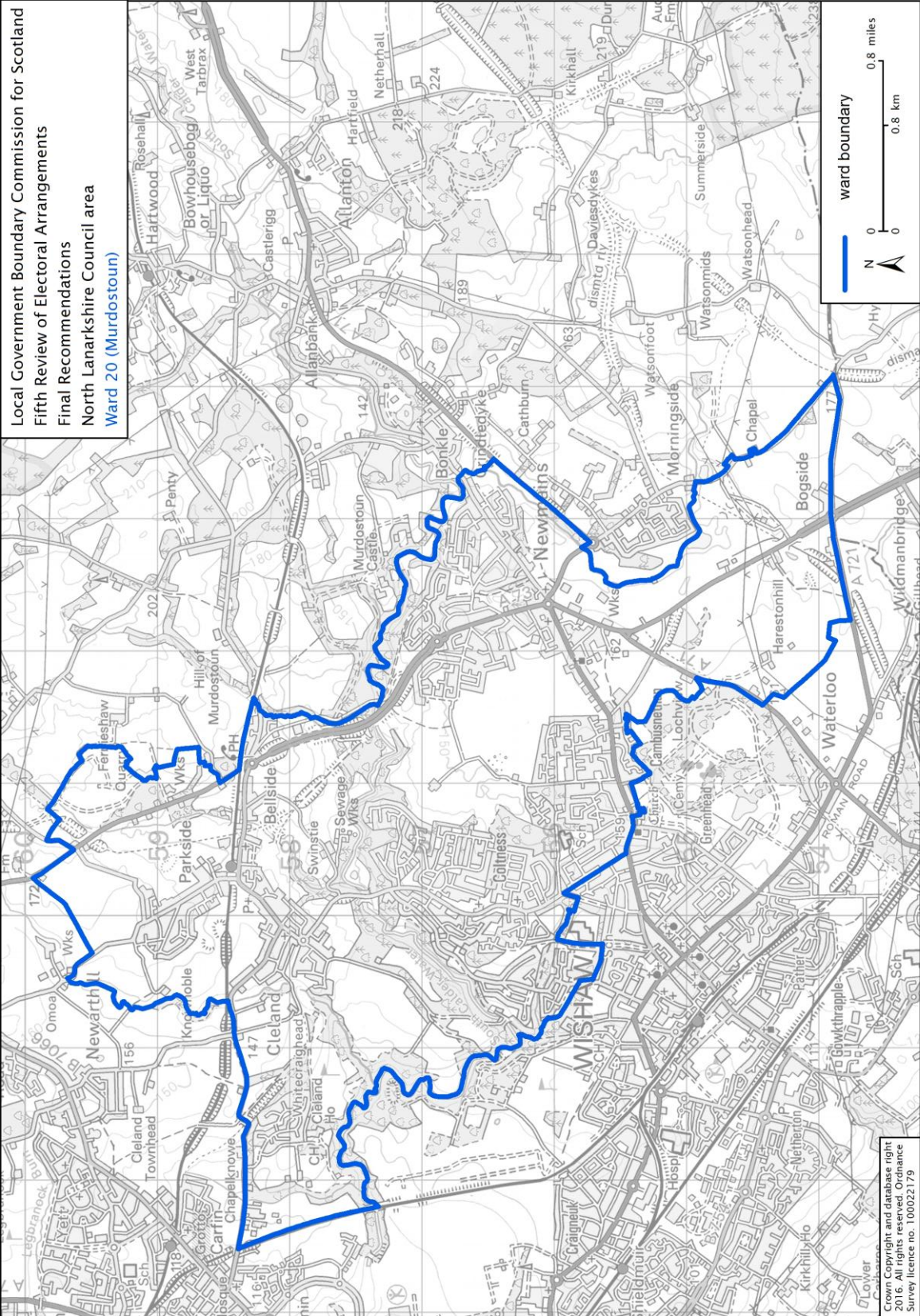
Local Government Boundary Commission for Scotland
 Fifth Review of Electoral Arrangements
 Final Recommendations
 North Lanarkshire Council area
 Ward 16 (Mossend and Holytown)



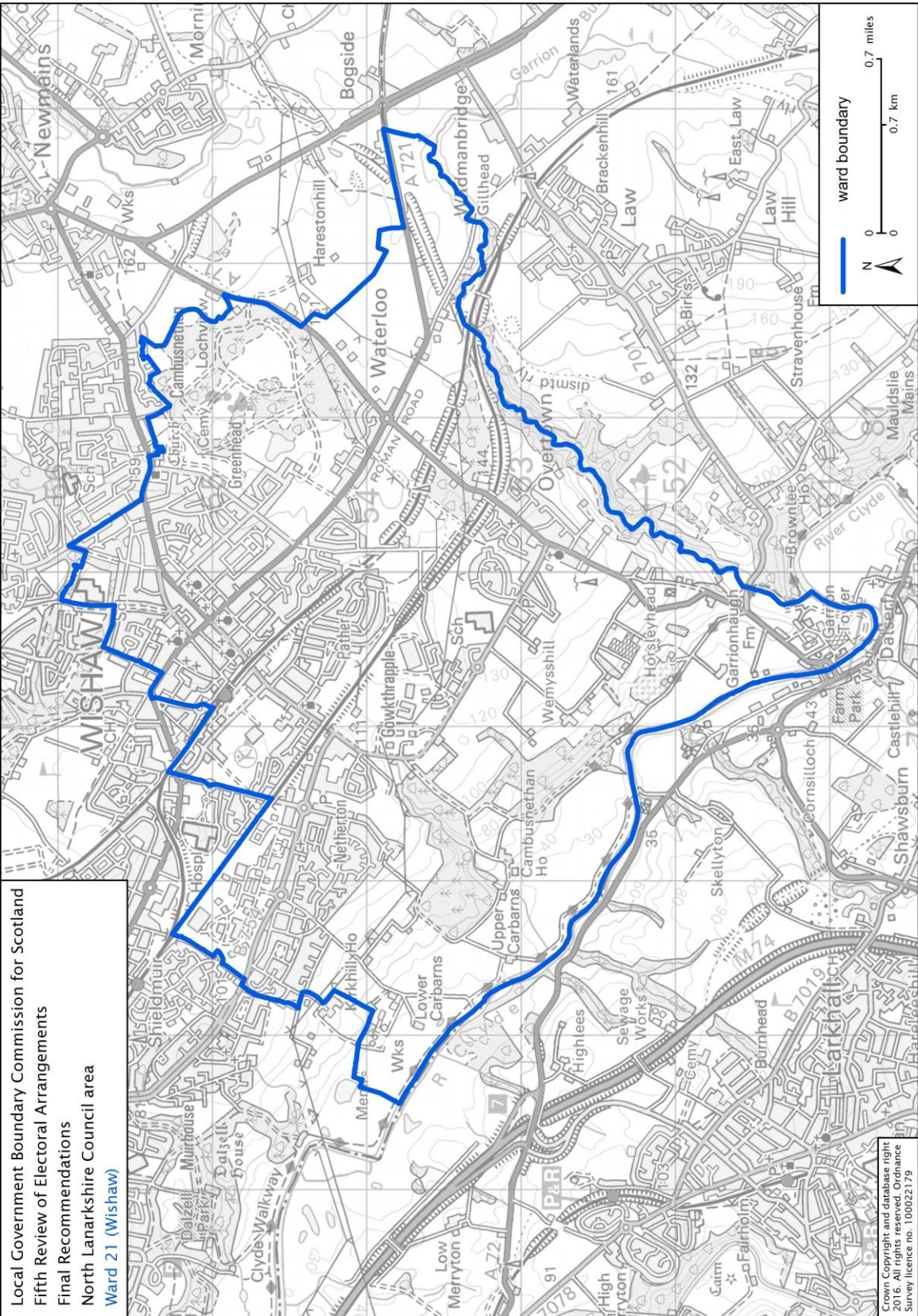
Local Government Boundary Commission for Scotland
 Fifth Review of Electoral Arrangements
 Final Recommendations
 North Lanarkshire Council area
 Ward 18 (Motherwell North)



Local Government Boundary Commission for Scotland
 Fifth Review of Electoral Arrangements
 Final Recommendations
 North Lanarkshire Council area
 Ward 20 (Murdochstoun)



Crown Copyright and database right
 2015. All rights reserved. Ordnance
 Survey licence no. 100022179



Appendices

Appendix A Existing and Recommended Wards for North Lanarkshire Council area

Appendix B Local Government (Scotland) Act 1973, as amended:
Schedule 6 – Rules to be observed in considering electoral arrangements

Appendix C Categorising Councils Matrix

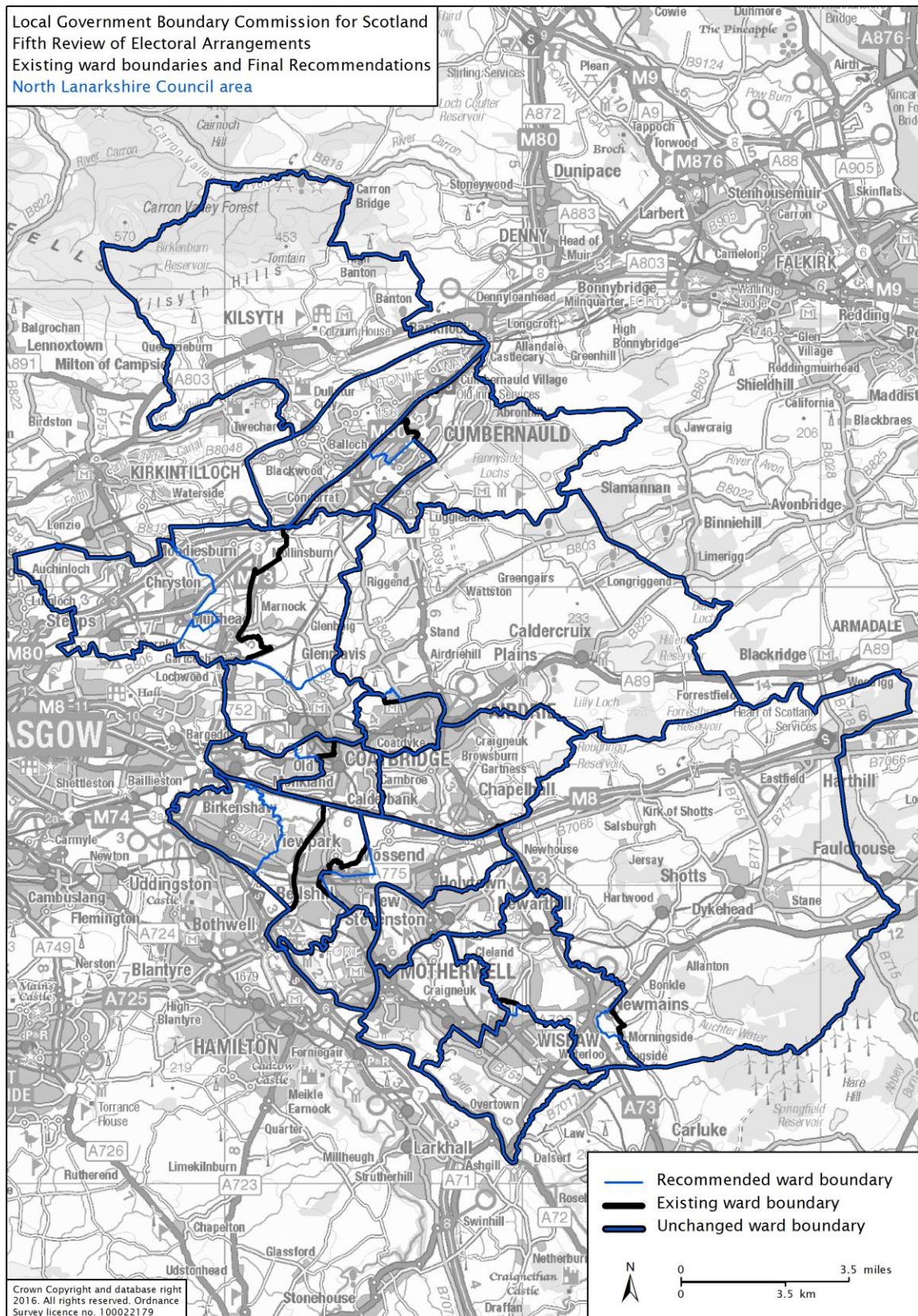
Appendix D Extract from Local Government (Scotland) Act 1973 (as amended)

Appendix E Timetable for the Fifth Reviews of Electoral Arrangements

Appendix F Index of Commission Meetings, Papers and Minutes of Meetings –
North Lanarkshire Council area

Appendix A

Existing and Recommended Wards for North Lanarkshire Council area



Appendix B

Local Government (Scotland) Act 1973, as amended: Schedule 6 – Rules to be observed in considering electoral arrangements

1(1) This schedule applies to the consideration by Scottish Ministers or the Boundary Commission of electoral arrangements for election of councillors of local government areas.

(2) Having regard to any change in the number or distribution of electors of a local government area likely to take place within the period of five years immediately following the consideration, the number calculated by dividing the number of local government electors in each electoral ward of that local government area by the number of councillors to be returned in that ward shall be, as nearly as may be, the same.

(3) Subject to sub-paragraph (2) above, in considering the electoral arrangements referred to in sub-paragraph (1) above regard shall be had to –

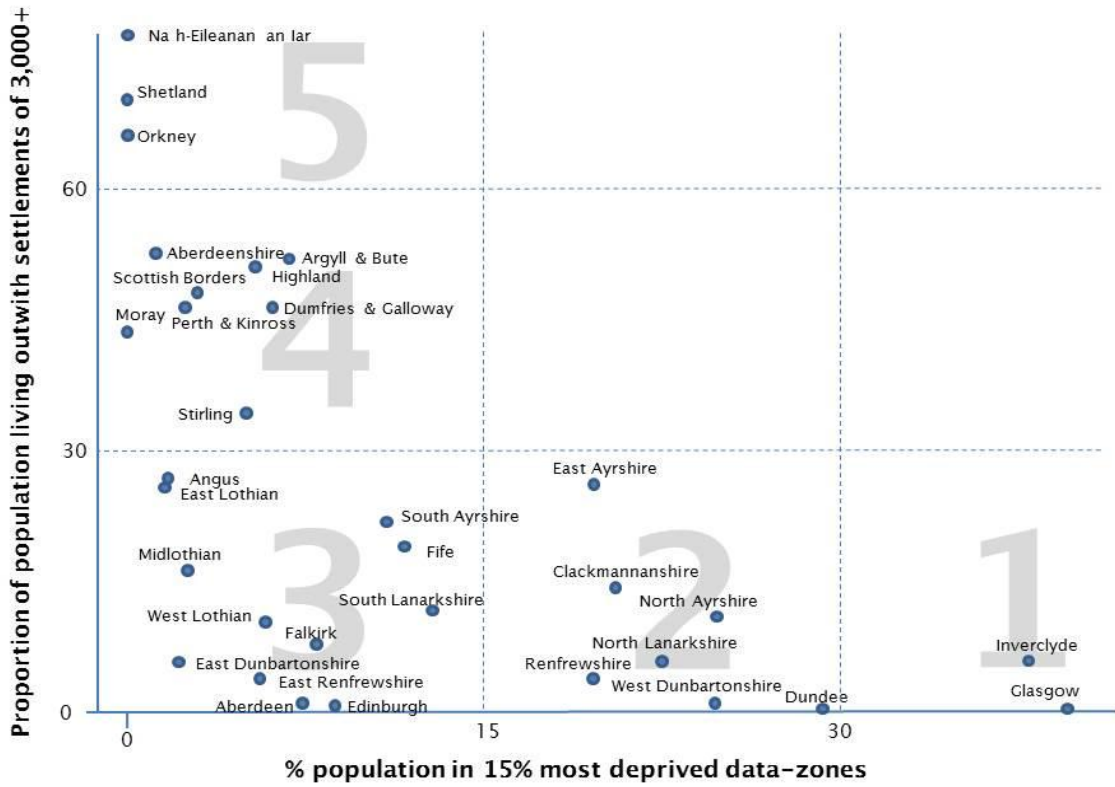
- (a) the desirability of fixing boundaries which are and will remain easily identifiable;
- (b) any local ties which would be broken by the fixing of any particular boundary

but if, in any case, there is a conflict between those criteria, greater weight shall be given to the latter.

2. The strict application of the rule stated in paragraph 1(2) above may be departed from in any area where special geographical conditions appear to render a departure desirable.

Appendix C

Categorising Councils Matrix



Appendix D

Extract from Local Government (Scotland) Act 1973 (as amended)

Conduct of Reviews

18 *Procedure for reviews*

(1) Where the Boundary Commission propose to conduct a review under the foregoing provisions of this Part of this Act, they shall take such steps as they think fit to secure that persons who may be interested in the review are informed of the proposal to conduct it and of any directions of the Secretary of State which are relevant to it.

(2) In conducting any such review, the Boundary Commission shall —

(a) consult —

(i) the council of any local government area affected by the review, and such other local authorities, community councils and public bodies as appear to them to be concerned;

(ii) any bodies representative of staff employed by local authorities who have asked the Boundary Commission to consult them; and

(iii) such other persons as they think fit;

(aa) at least two months before taking any steps under paragraph (b) below to inform other persons of any draft proposals or any interim decision not to make proposals, inform the council of any local government area affected by the review of those proposals or that decision;

(ab) before taking any such steps, take into consideration any representation made to them by such a council during the period of two months beginning on the day on which the council is informed under paragraph (aa);¹

(b) take such steps as they think fit for seeing that persons who may be interested in the review are informed of any draft proposals or any interim decision not to make proposals, and of the place or places where those proposals or that decision can be inspected;

(c) in particular, deposit copies of those proposals or that decision at the offices of the council of any local government area which may be affected thereby and require any such council to keep the copies available for inspection at their offices for a period specified in the requirement; and

¹ Sub-section 18(2)(aa) and 18(2)(ab) inserted by Local Governance (Scotland) Act 2004

(d) take into consideration any representation made to them within that period.

(2A) The Scottish Ministers may give directions to —

- (a) the Boundary Commission,
- (b) the council of any local government area affected by a review,

in relation to consultation under subsection (2)(a) above.

(2B) Such directions may be given generally or in relation to particular reviews or particular aspects of reviews.²

(3) Where the Boundary Commission make a report under this Part of this Act they shall —

(a) take such steps as they think fit for securing that persons who may be interested in the report are informed of it and of the place or places where it can be inspected;

(b) in particular, deposit copies of the report at the offices of the council of any local government area which may be affected thereby and require any such council to keep the copies available for inspection at their offices until the expiration of six months after the making of an order giving effect, with or without modifications, to any proposals contained in the report, or after a notification by the Commission that they have no proposals to put forward or, as the case may be, by the Secretary of State that he does not propose to give effect to the proposals of the Commission.

(4) Subject to the foregoing provisions of this section, the procedure of the Boundary Commission in conducting any review under this Part of this Act shall be such as they may determine.

19 *Local inquiries*

(1) The Boundary Commission may cause a local inquiry to be held with respect to any review carried out by them under this Part of this Act.

² Sub-section 18(2A) and 18(2B) inserted by Local Governance (Scotland) Act 2004

Appendix E

Timetable for the Fifth Reviews of Electoral Arrangements

Description	Start	Finish
Reviews commenced	21 February 2014	
Commission met separately with all 32 councils to provide a background to the reviews	25 February 2014	2 April 2014
2-month statutory consultation period with councils on councillor numbers	21 February 2014	23 April 2014
Commission considered councils' responses	April 2014	May 2014
12-week public consultation period on councillor numbers	29 May 2014	21 August 2014
Commission considered responses and agreed councillor numbers	September 2014	January 2015
Commission developed proposals for wards	September 2014	January 2015
2-month statutory consultation period with councils on proposals for wards	19 March 2015	19 May 2015
Commission considered councils' responses	June 2015	July 2015
12-week public consultation on proposals for wards	30 July 2015	22 October 2015
Commission considered all representations and developed its final recommendations	November 2015	April 2016
Commission submitted its reports to Scottish Ministers	May 2016	

Appendix F

Index of Commission Meetings, Papers and Minutes of Meetings – North Lanarkshire Council area

Meeting Date	Paper Number	Minutes
09.10.2013	Paper 2193/13	M349
12.11.2013	Paper 2198/13	M350
18.12.2013	Paper 2203/13	M351
15.01.2014	Paper 2206/14	M352
01.05.2014	Paper 2217/14	M355
18.12.2014	Paper 2264/14	M362
03.02.2015	Paper 2276/15	M364
03.03.2015	Paper 2276/15	M365
07.07.2015	Paper 2326/15	M368
09.11.2015	Paper 2346/15	M371
08.12.2015	Oral Update	M372
19.04.2016	Paper 2395/16	M377

